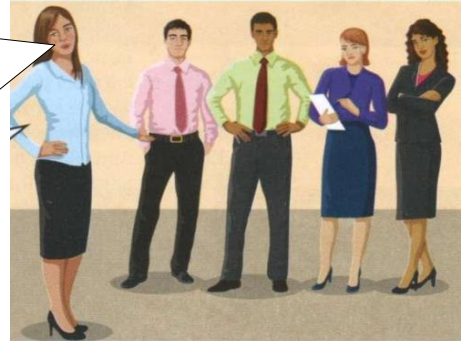


AN IT TEAM

Hi! I'm Sylvia, the IT team leader, and this is Isabelle, Andrew, Carla and Tom. **We are** all IT professionals. Isabelle **is** a database administrator; **her area is** data analysis. Andrew's an IT support officer and he's in the technical support area. Carla and Tom are system analysts, **their area is** IT systems analysis. **We're** all in the IT team at university. **Our offices are** in building 8.



Read and:

1. Underline the words you don't understand and find their meanings.

2. Write the name for each job or area of work.

- ... IT support officer
- ... IT team leader
- ... system analysts
- ... technical support area
- ... data analysis area

3. Mark the sentences true (T) or false (F). Correct the false.

- This is** the software development team.
- They're** in the IT team at university.
- Their offices aren't** in building 8.
- Sylvia **isn't** a database administrator.
- Andrew 's in the technical support area.
- Carla and Tom **aren't** IT support officers.
- They're** system analysts.

4. Put the words in **bold** in the team introduction and in exercise 3 under the correct headings in the table.

Complete the table:

Personal pronouns	Possessive adjectives	Verb 'be'	
		affirmative	negative
I	my	'm (am)	'm not (am not)

A modo de síntesis podemos decir que:

- en inglés hay 7 subject pronouns: I, you, ...
- el verbo 'be' tiene 3 conjugaciones en el presente: am, ...
- estas conjugaciones tienen una forma larga y una forma corta: am = 'm; ...
- para hacer oraciones negativas usamos la partícula not inmediatamente después de 'be': am not, ...
Ejemplos: I **am not** an engineer.
Julia **is not** the network administration team leader.
...
- también hay formas cortas para el negativo: am not = 'm not, ...
Ejemplos: I'**m not** an engineer.
Julia **isn't** the network administration team leader.
...
- los possessive adjectives o adjetivos posesivos, sirven para hablar de lo que nos pertenece y que a cada personal pronoun le corresponde un possessive adjective.
Ejemplos: My office is in Melbourne.
Your office is in Melbourne.
...
- Queda pendiente para la próxima clase el análisis de cómo responder preguntas.

Exercises:

1. Put the words in the correct order. Start with the underlined word.

A: ¹ I / George / 'm / Hi. Hi, I'm George.
B: ² are / from / Where / you?
A: ³ 'm / Italy / from / I.
B: ⁴ from / Are / Rome / you?
A: ⁵ I'm / No, / not. ⁶ Venice / from / I'm.
⁷ you / from / Rome / Are?
B: ⁸ from / I'm / Italy / No, / not.
⁹ Barcelona, / I'm / Spain / from / in.

2. Change the words in **bold** to *they, we or you*.

A Change the words in bold to *they, we or you*.

1 Kevin and Nick are actors.

They're actors.

2 Michelle and I are from France.

3 You and Chan are in the wrong room.

4 Are your mother and father Brazilian?

5 My teachers are Louise and Kerri.

6 Ryan and I are married.

7 **The students** aren't in class.

8 A: Where are you and Jeff?

_____?

B: Jeff and I are in class.

3. Write "my, your, his, her, its, our" or "their" to complete the sentences.

1. "What's _____ favourite team, Tom?" "_____ favourite team is Manchester United."
2. "Who's that?" "She is _____ girlfriend. _____ name is Julie."
3. _____ name is Johanna.
4. _____ wife is middle-aged.
5. "Are you a doctor?" "Where is _____ hospital?"

4. Circle the correct word.

1. This is **our** / **we** house. **Its** / **It is** very small.
2. **My** / **I** laptop is a Macintosh, but **I** / **my** mobile is a Samsung.
3. This is my dog. **Its** / **it** name is Sam.
4. Lucy and **I** / **my** are sisters.
5. **Our** / **We** are students and this is **we** / **our** teacher.

5. Complete the sentences with "Subject Pronouns" or "Possessive Adjectives"

1. My mother is a teacher. _____ students are clever.
2. John isn't in _____ office.
3. Jenny and _____ husband are from the UK.
4. _____ is a good tennis player.
5. _____ is a tourist _____ name is Alex.

10. Complete the text about Mark. Use **not aren't** (x2) and **isn't**



Hi, I'm Andrew. I'm an IT support officer in the IT team at university. In this photo, I'm in building 8, I'm in building 5 with Jenny. She a database analyst, she's an IT teacher. We in her office, we are in the computer room. The computers in the room very modern. We are updating software.