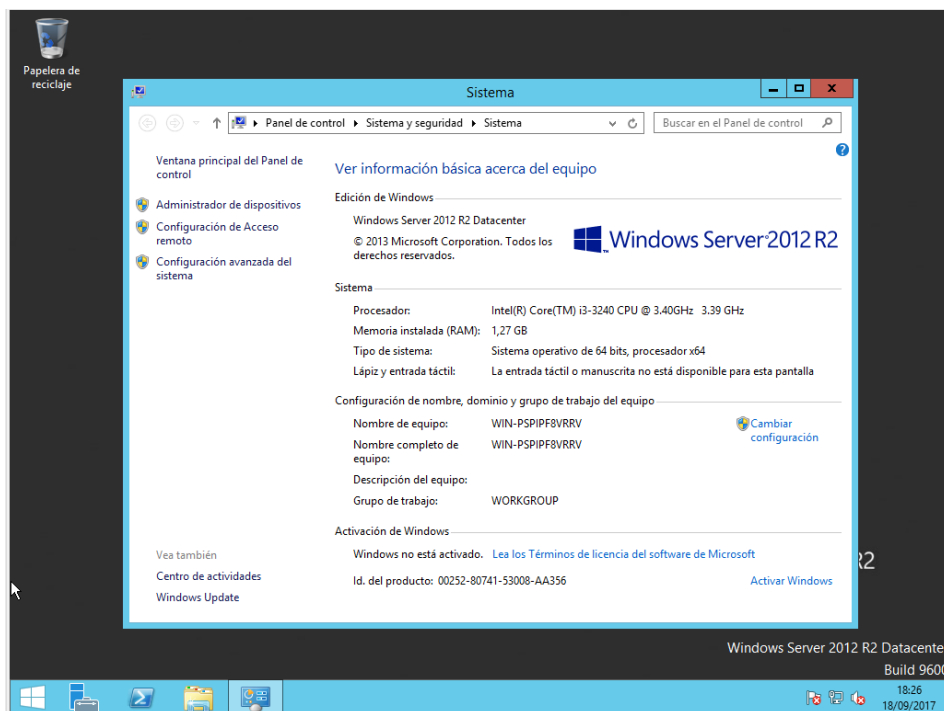
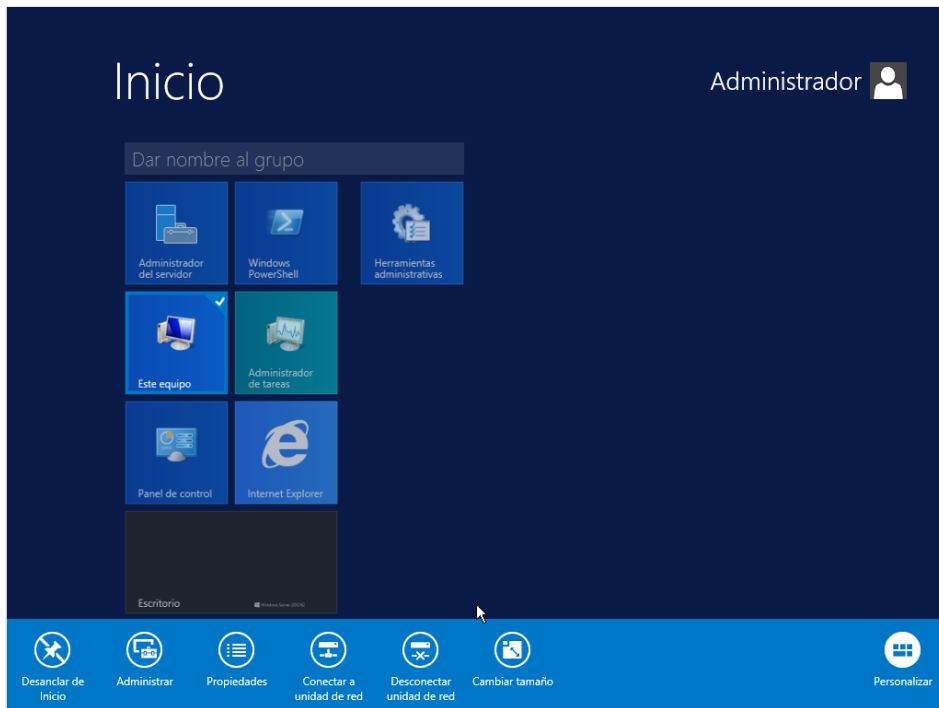
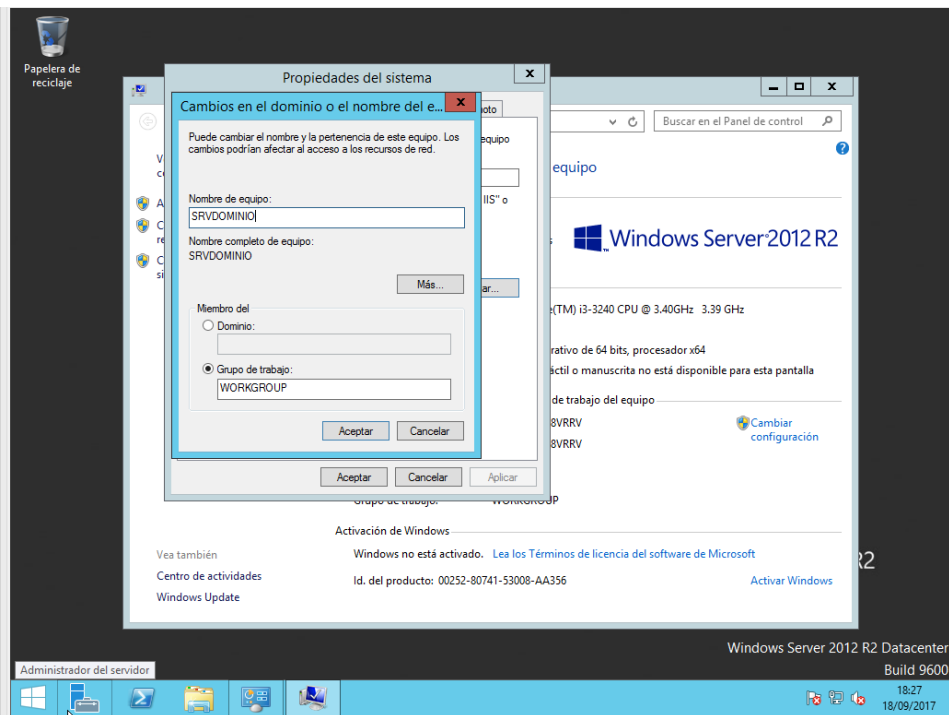
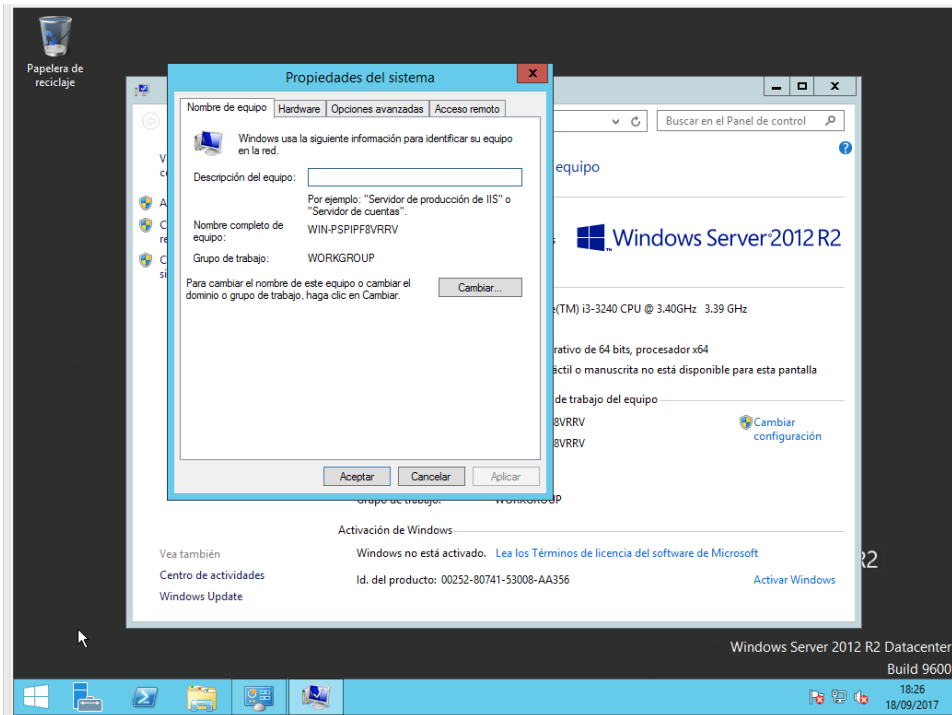


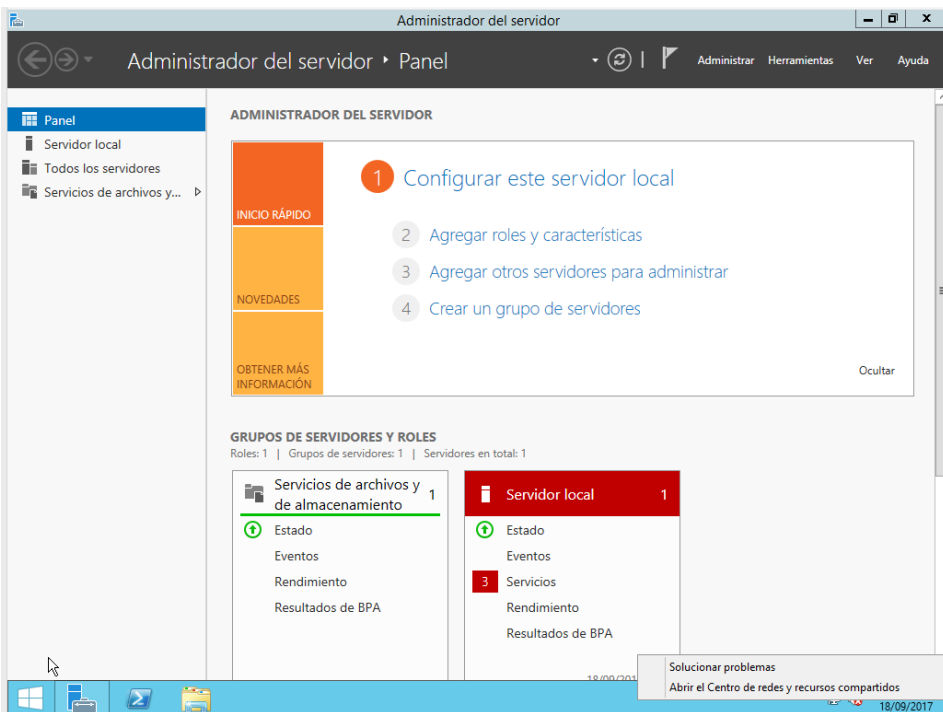
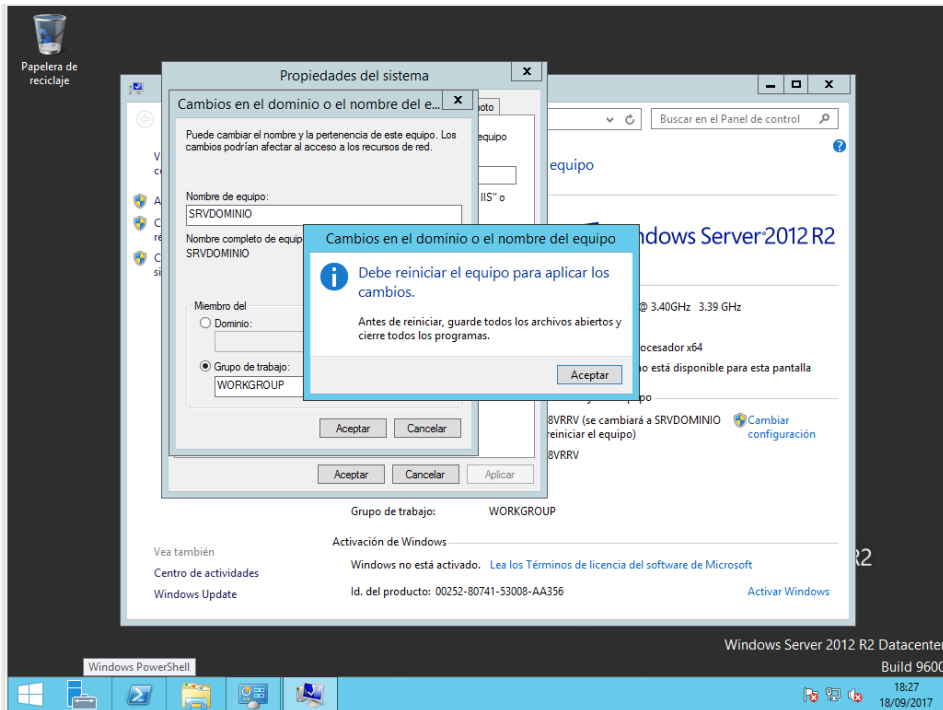
Trabajo Practico N° 5

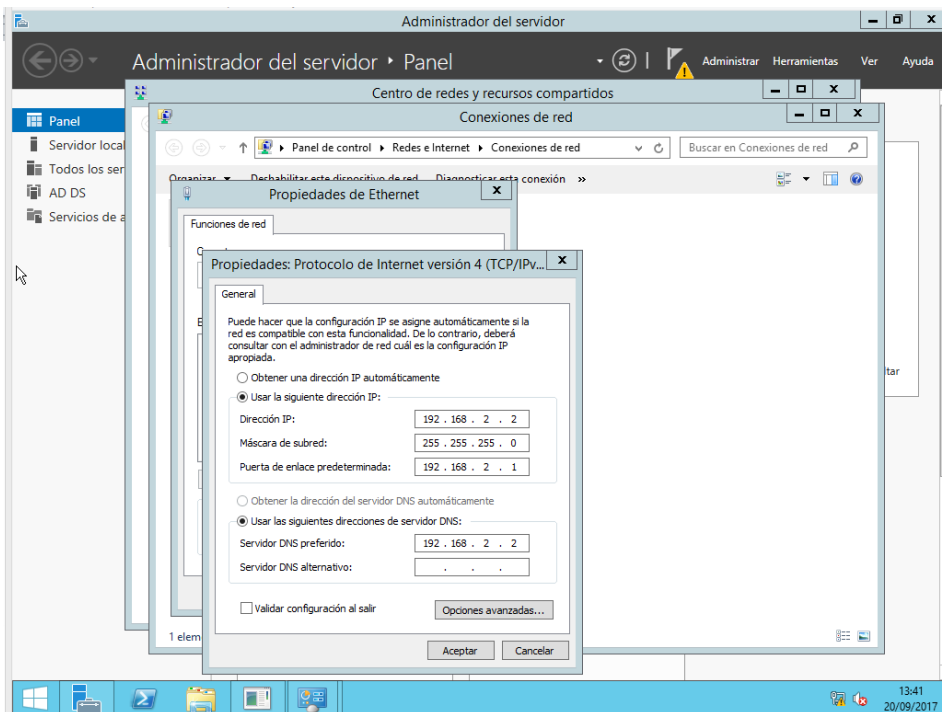
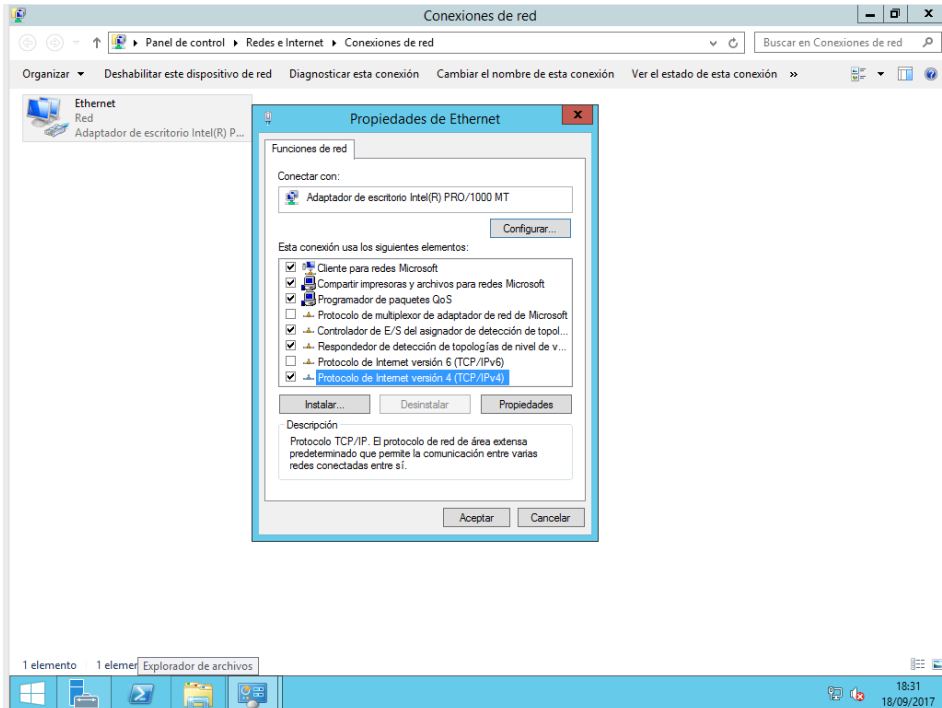
Instalación de Active Directory en Windows Server 2012

Antes de Instalar el Active Directory hay que configurar los siguientes parámetros:

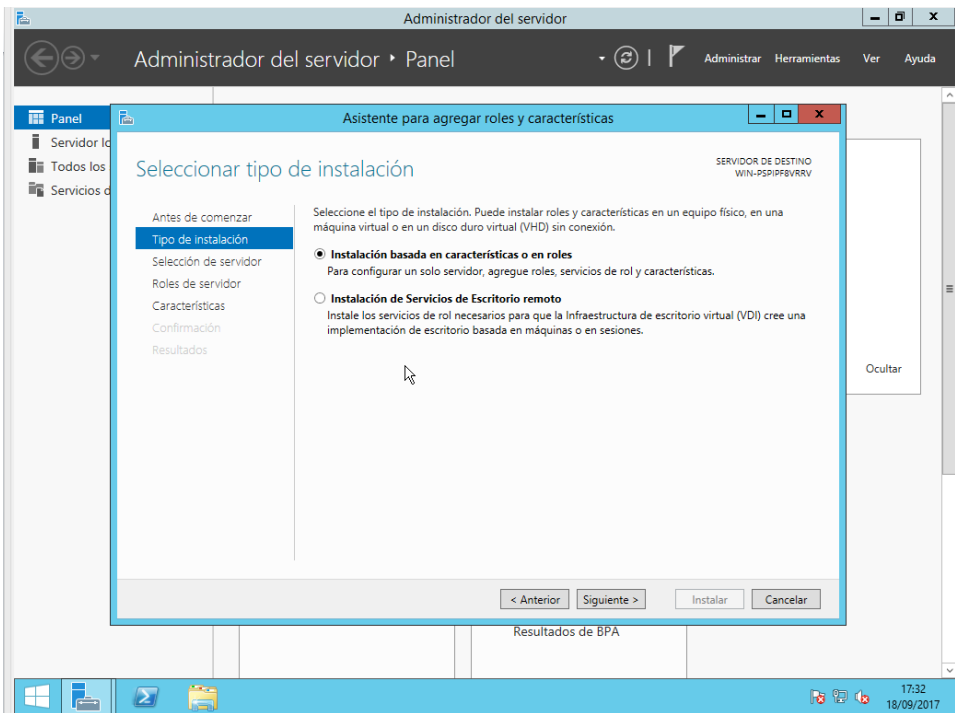
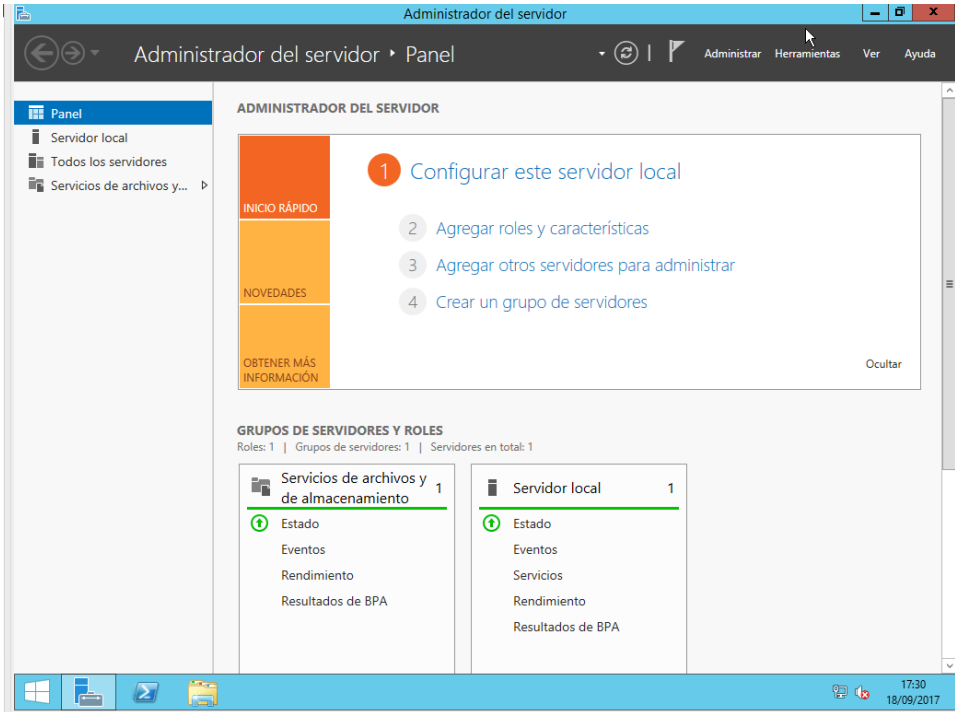


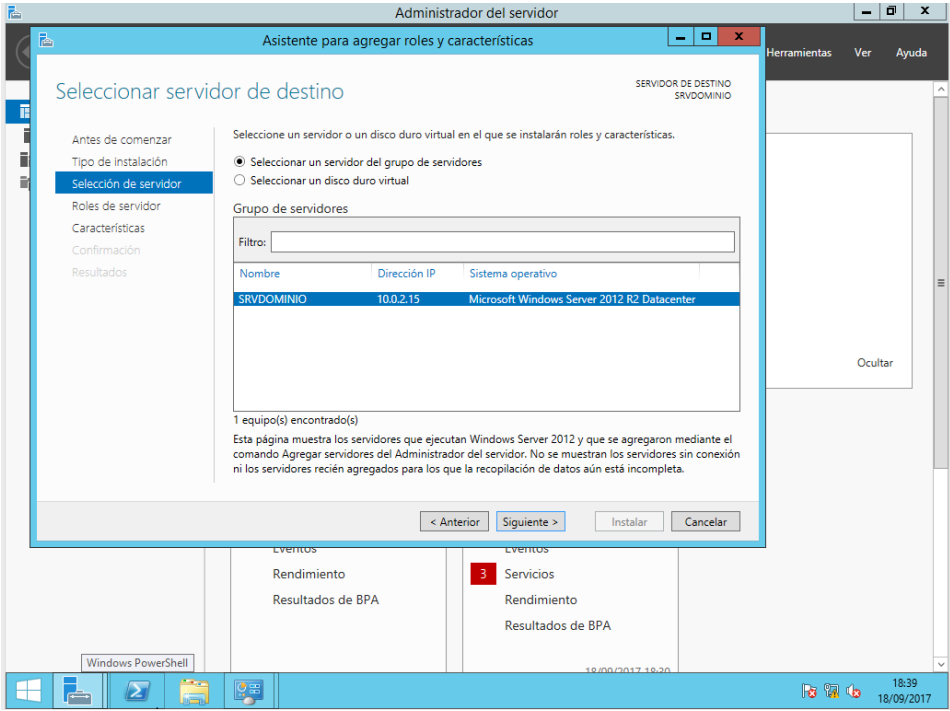
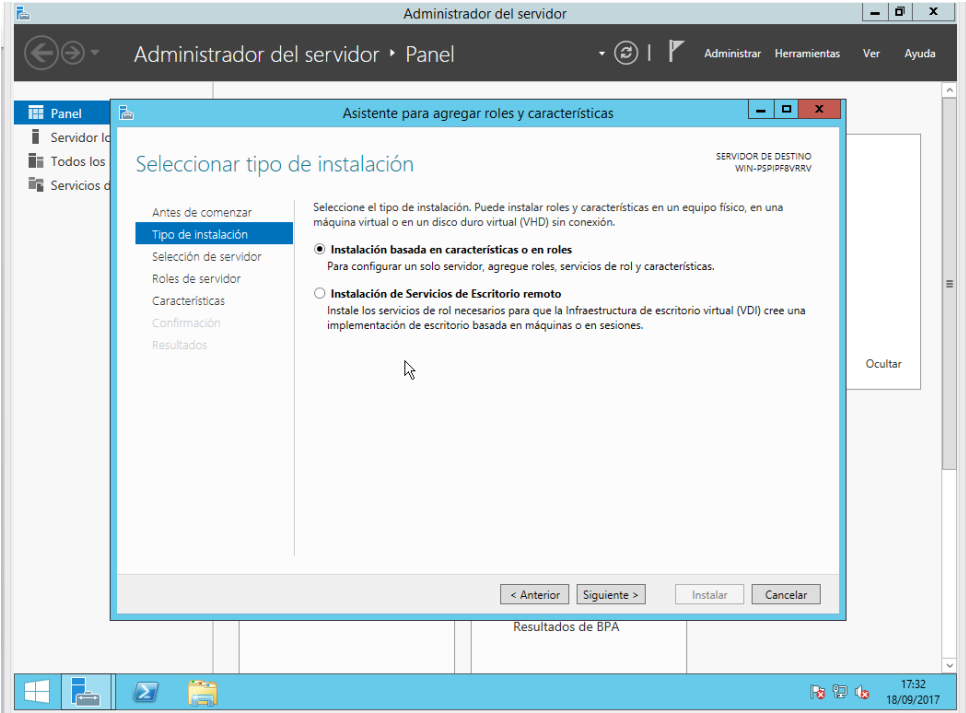


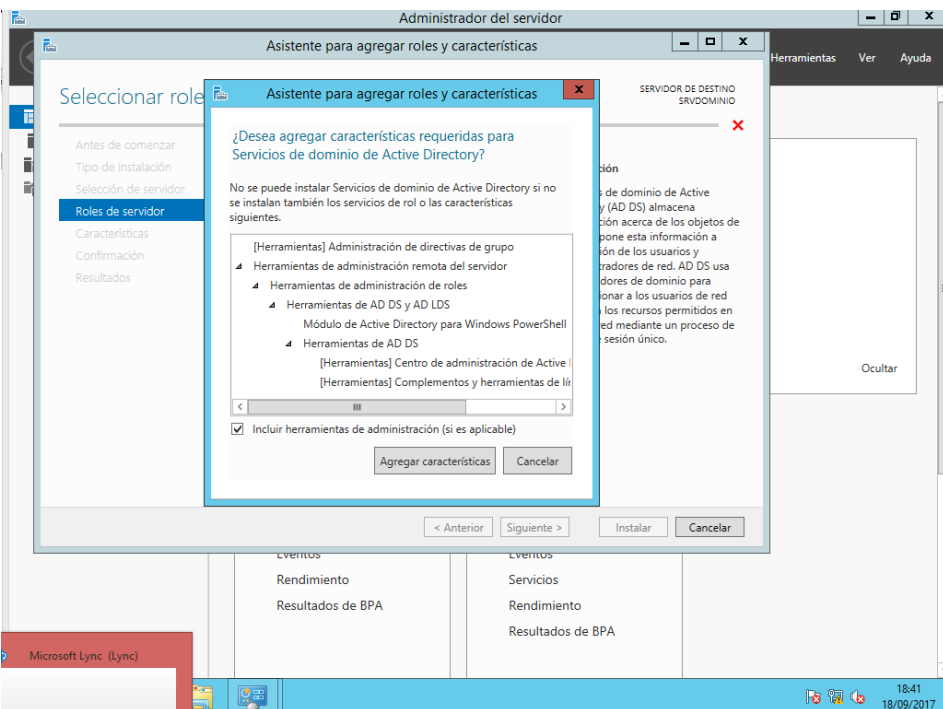
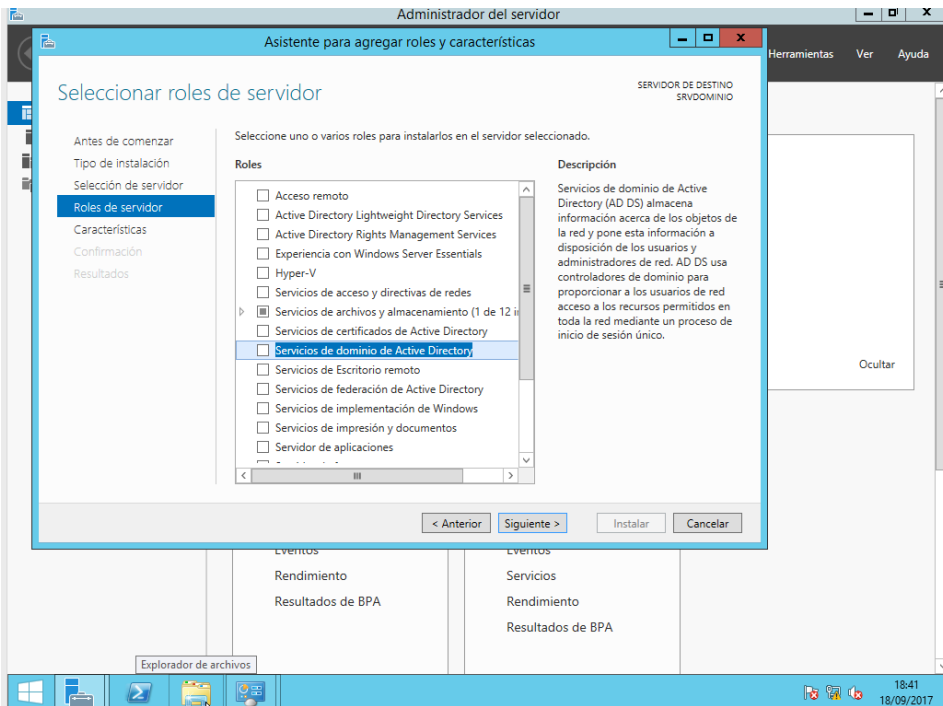




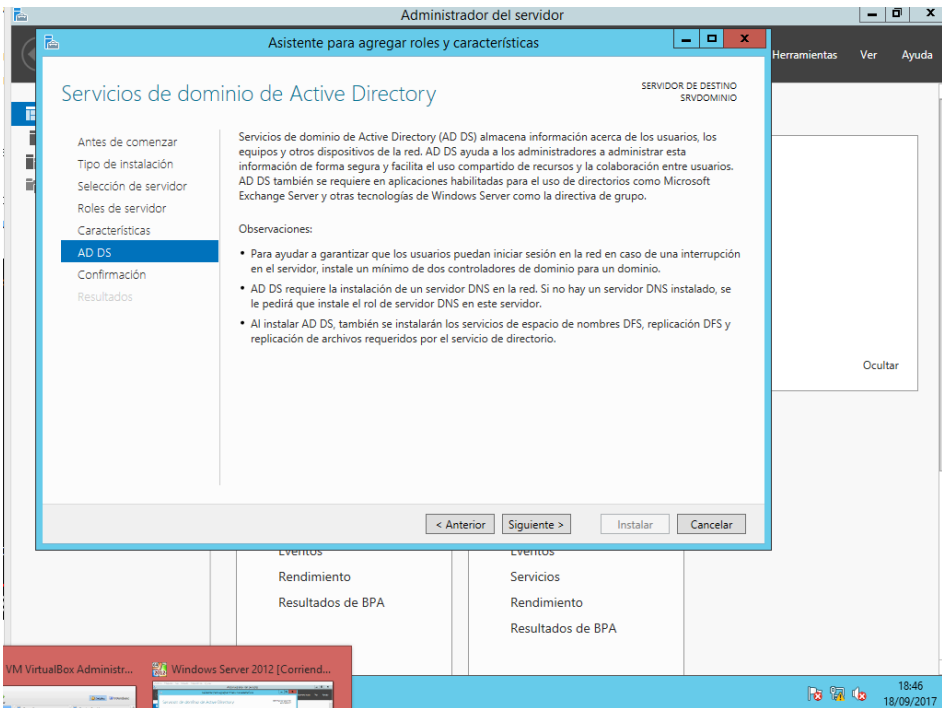
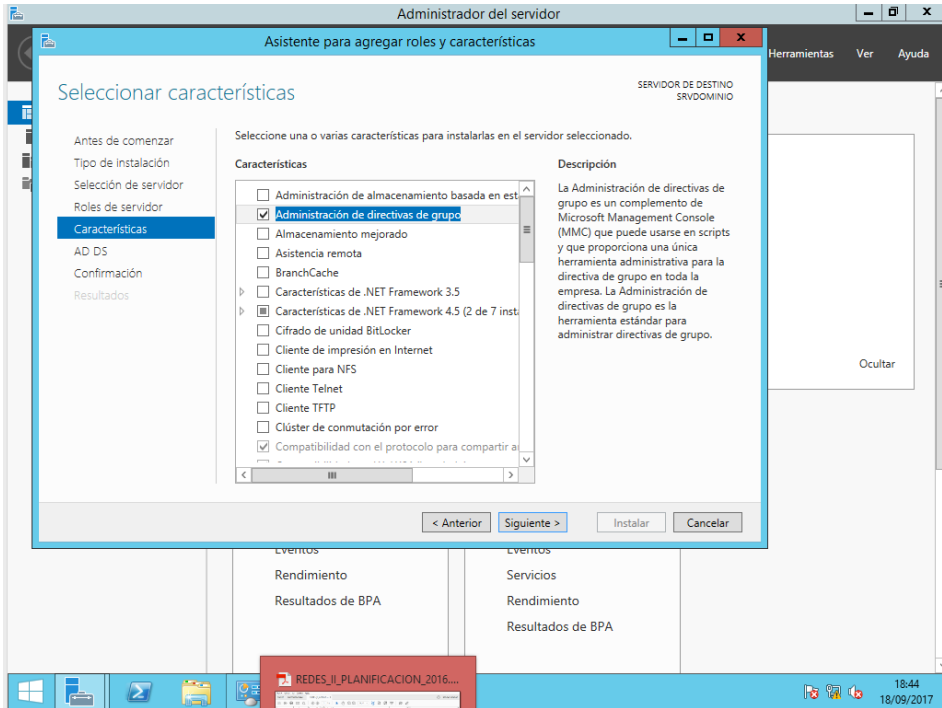
Ahora si instalamos Active Directory

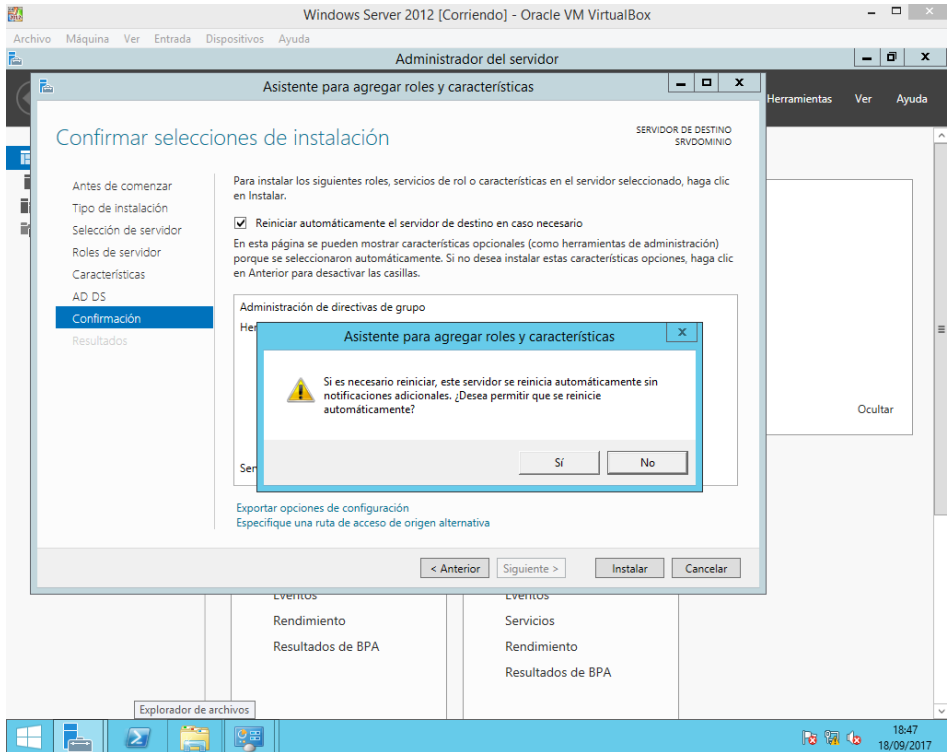




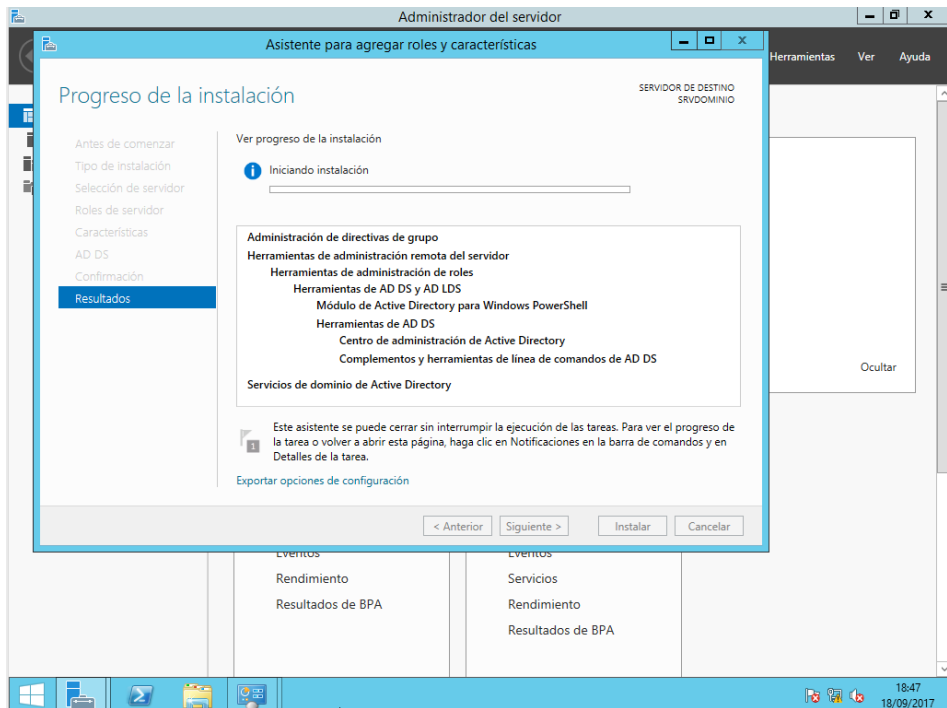


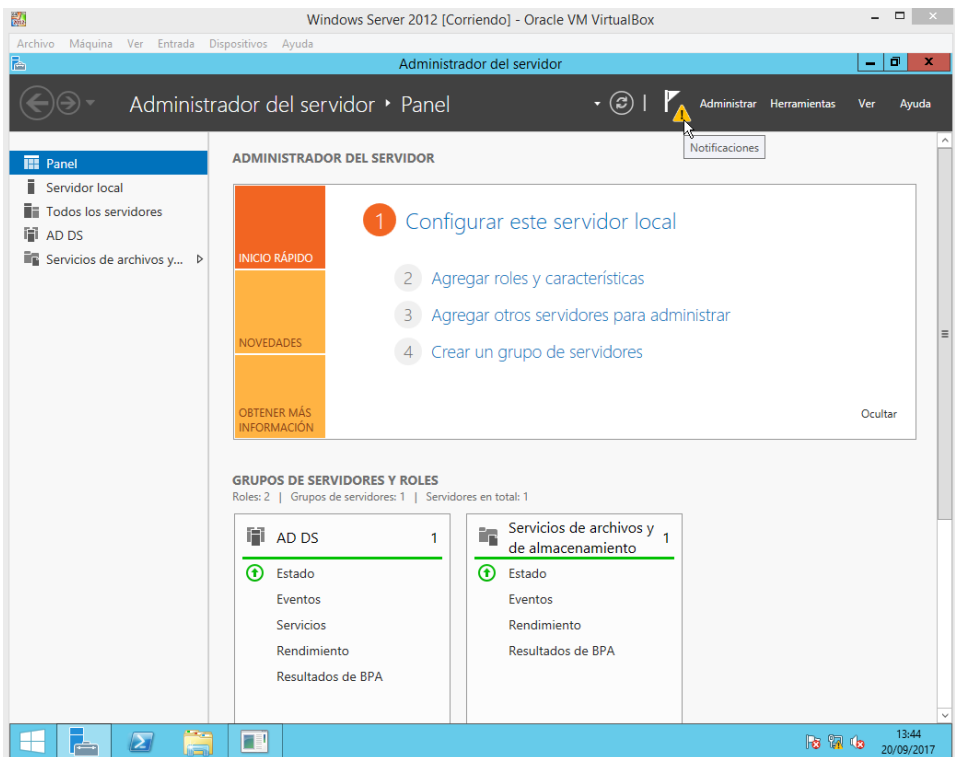
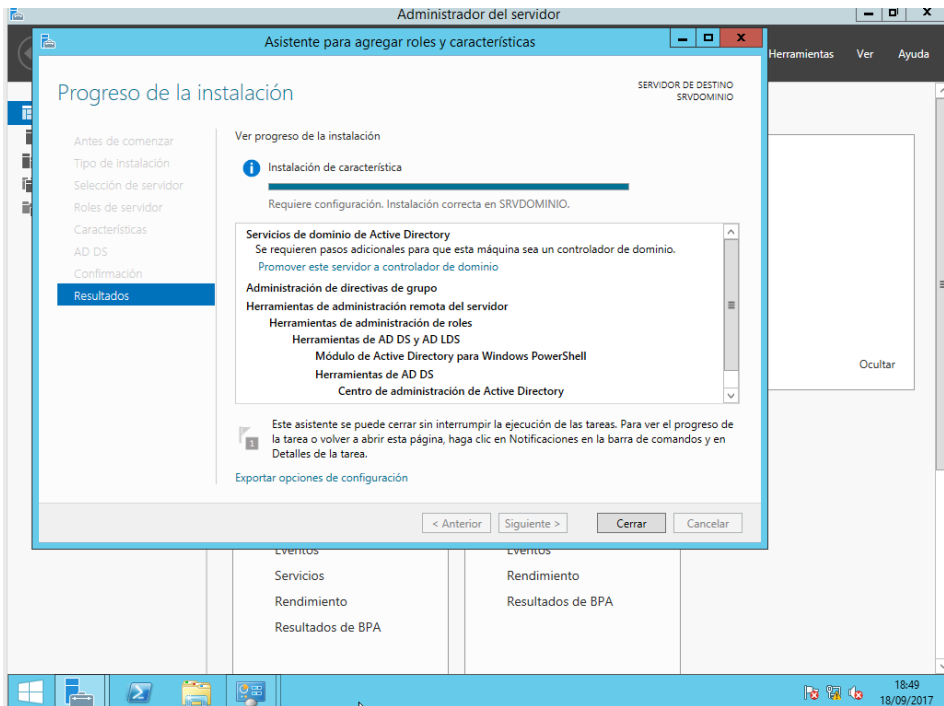
Pulsamos botón agregar características

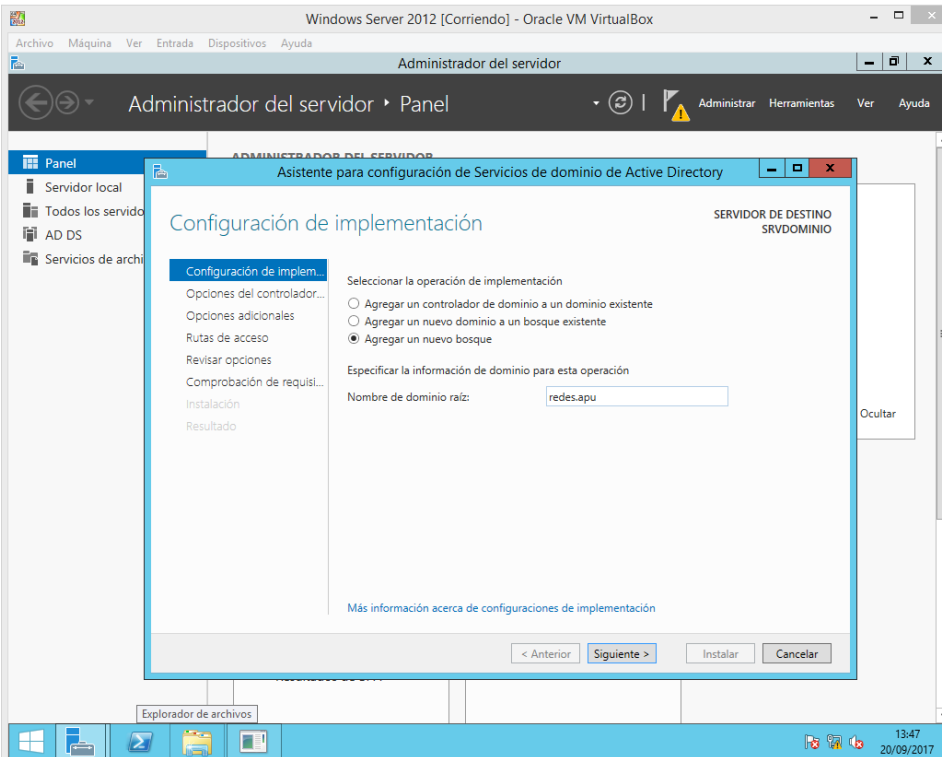
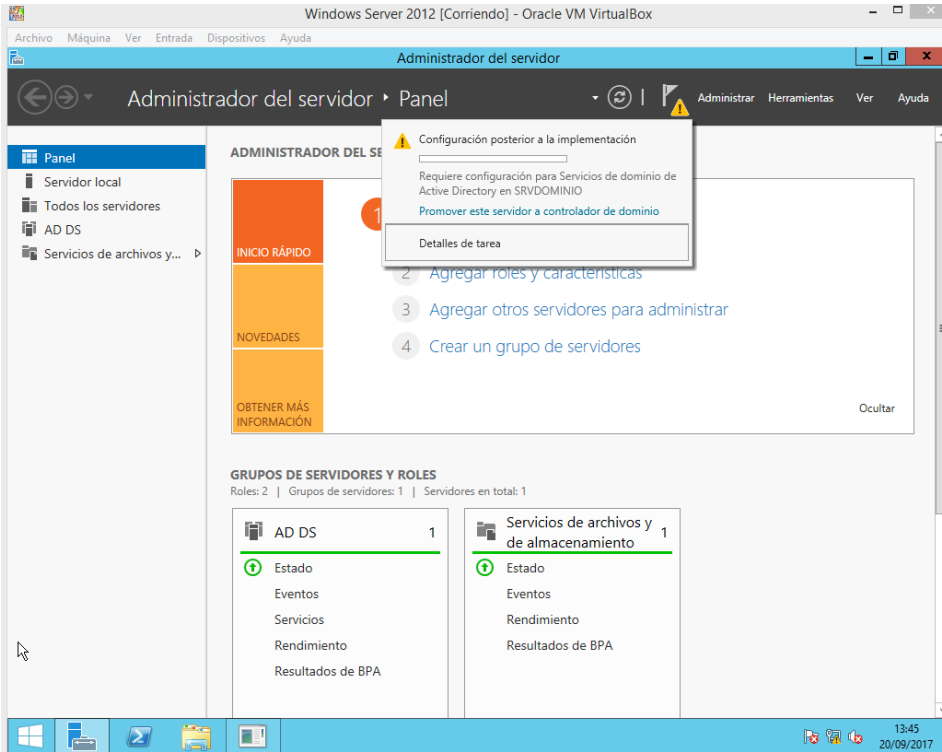


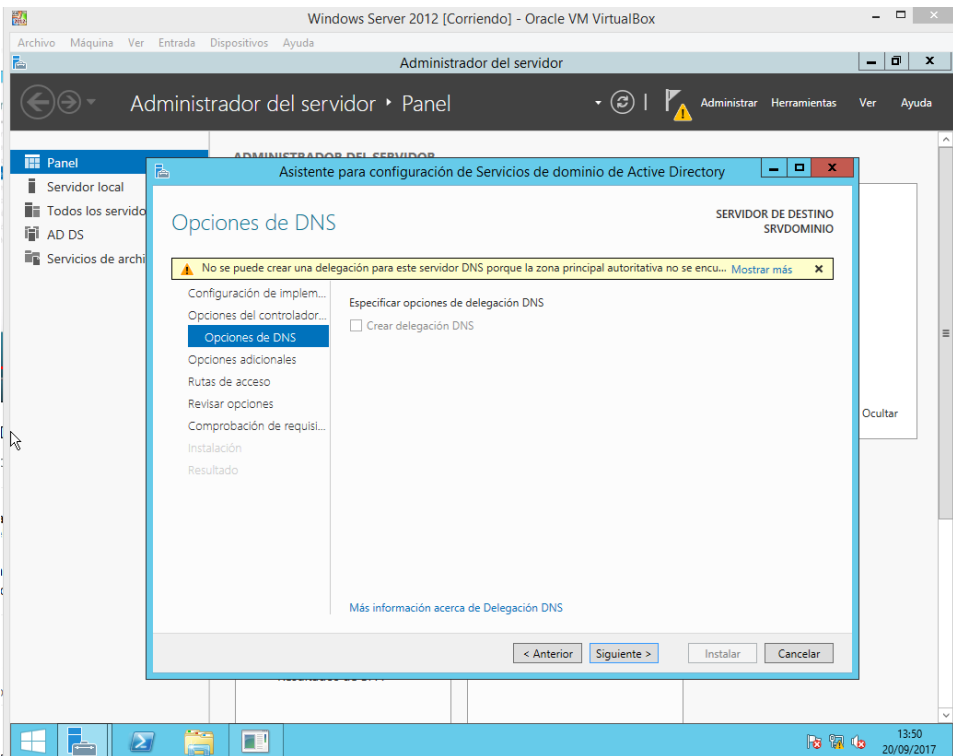
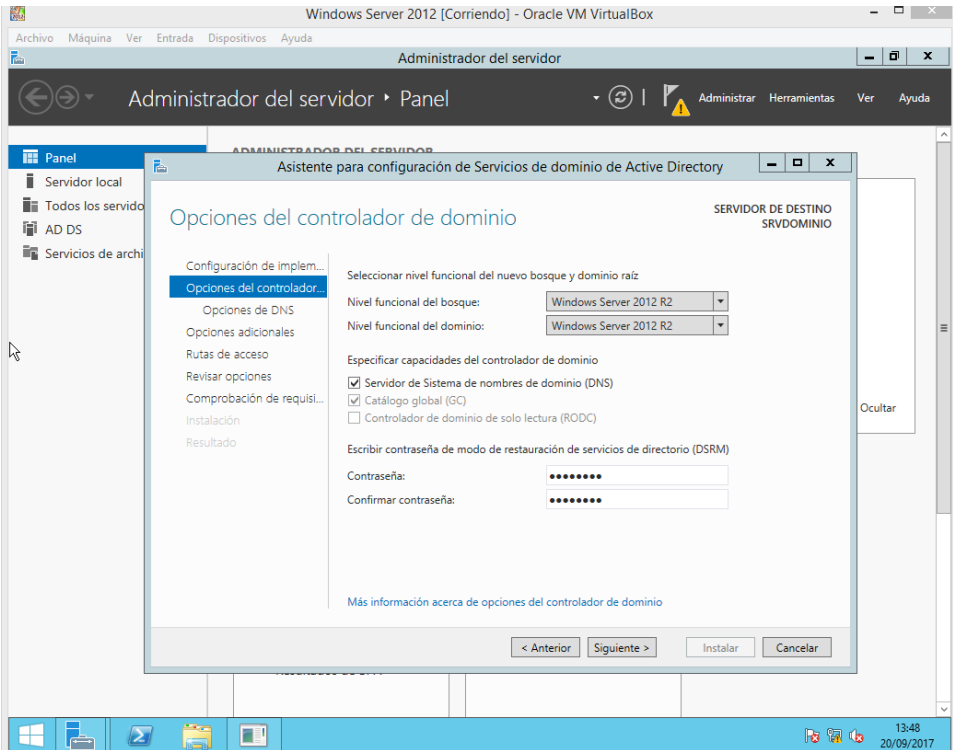


Presionamos que si y luego botón instalar

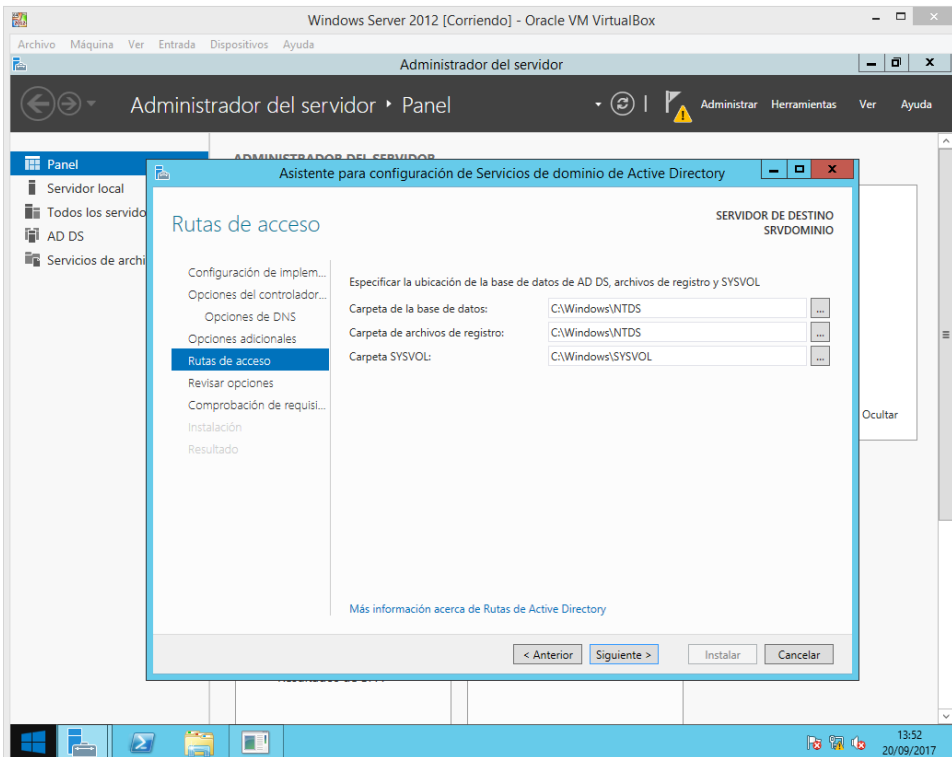
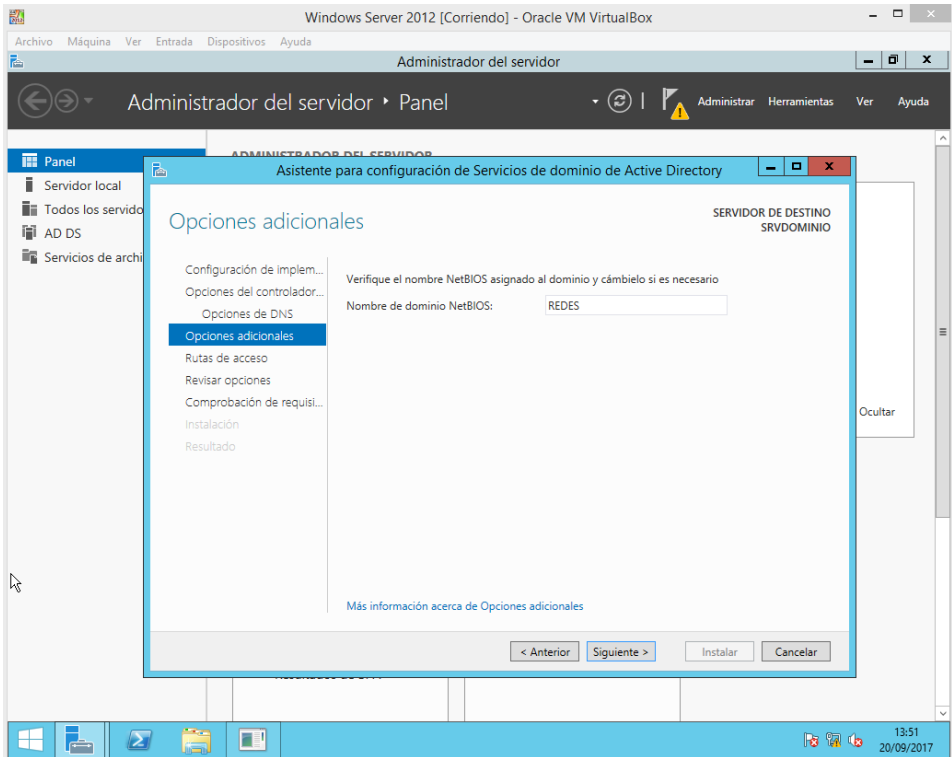


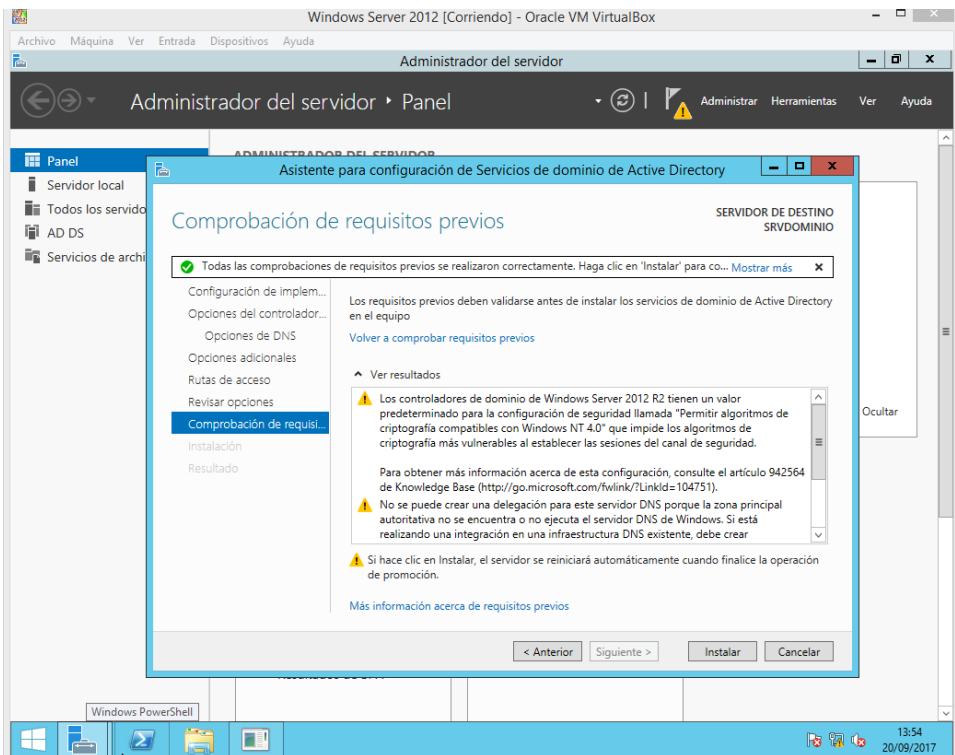
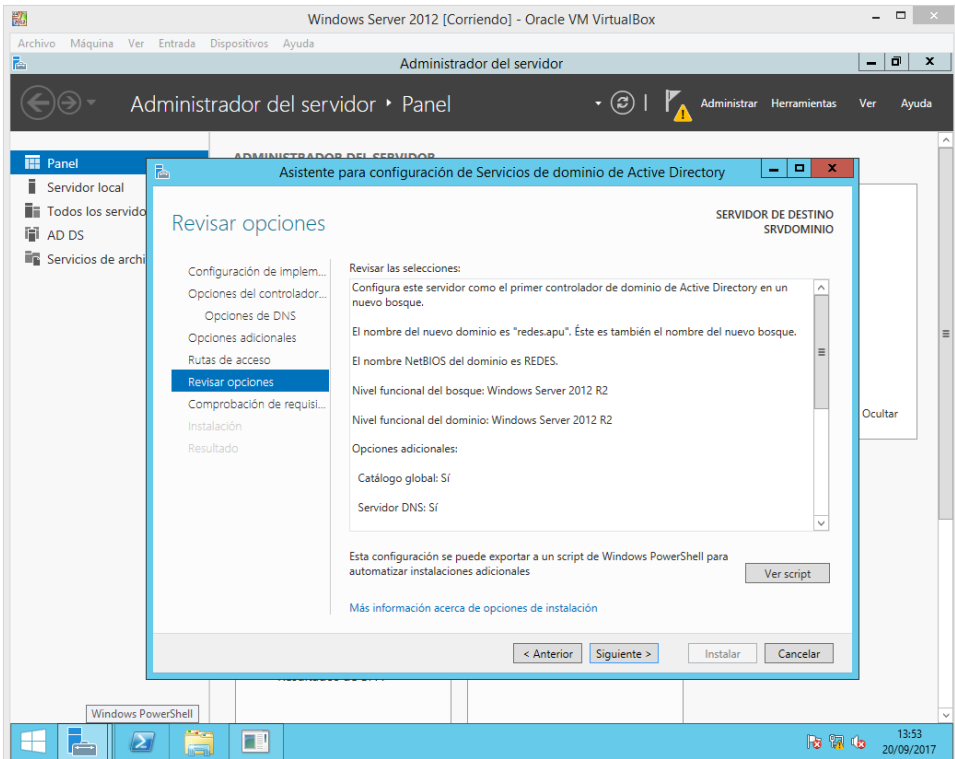




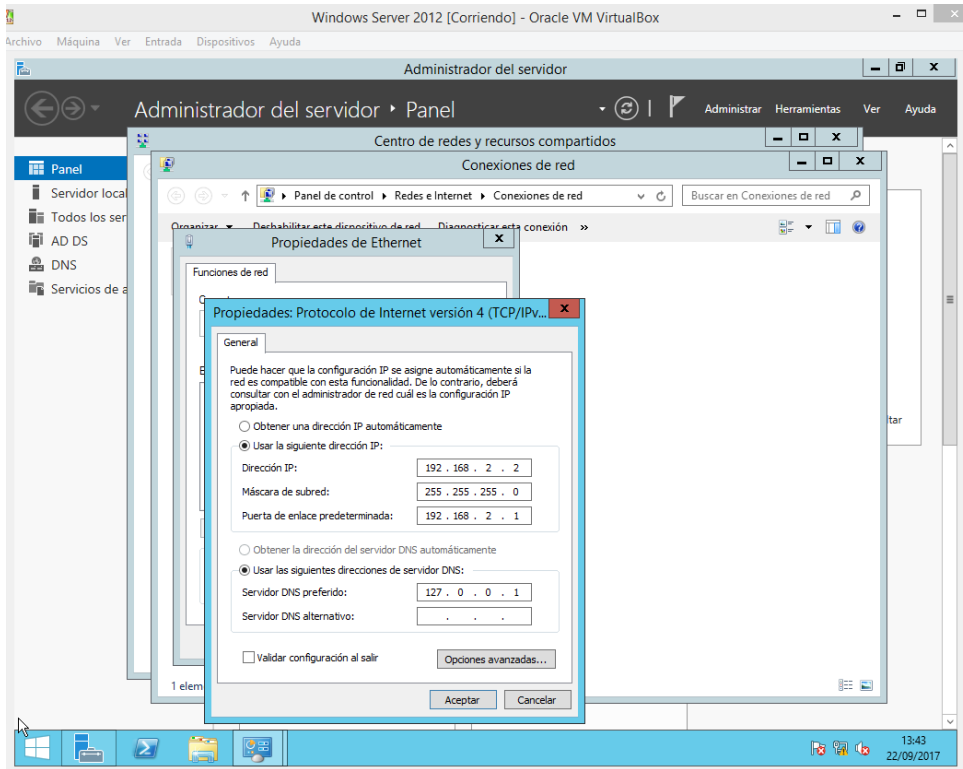


A este error lo pasamos por alto

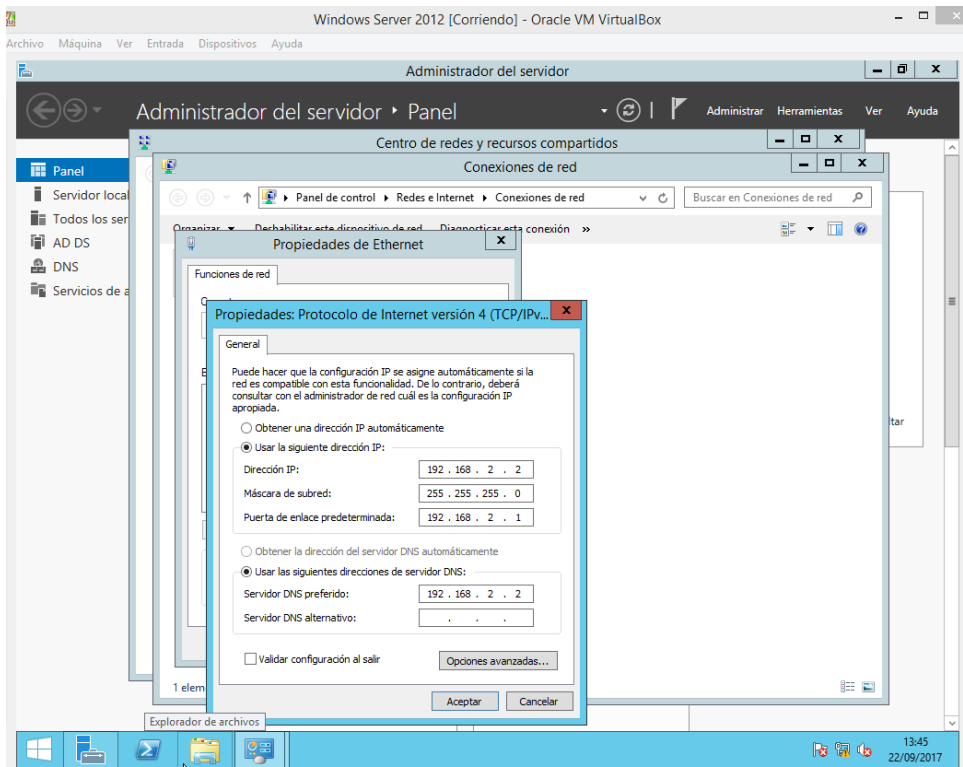


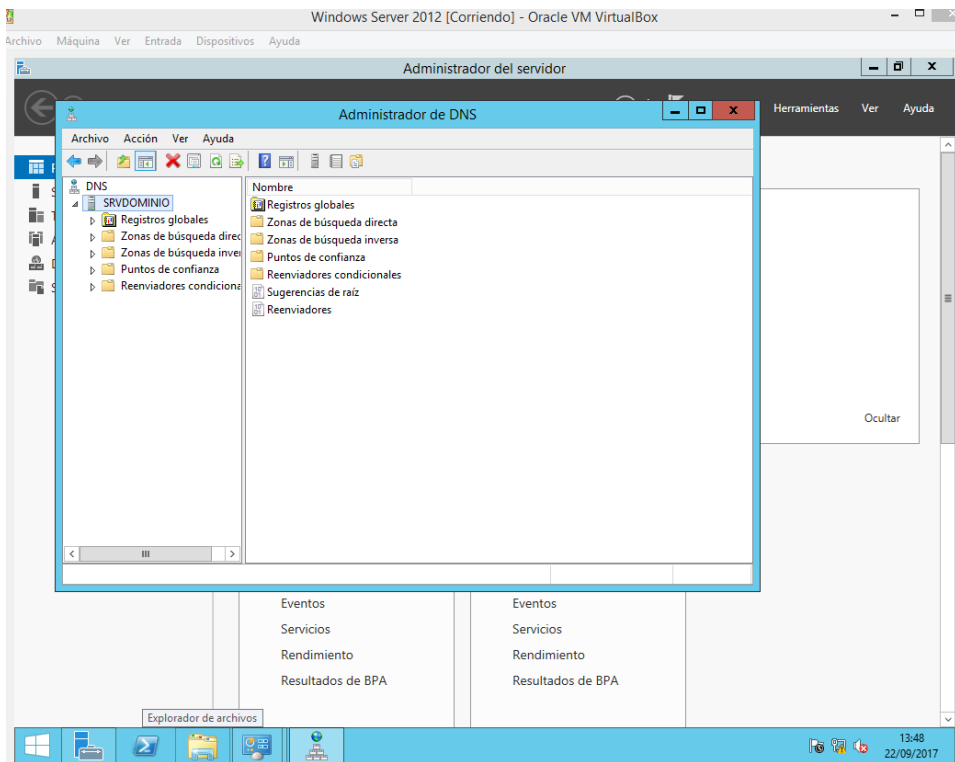
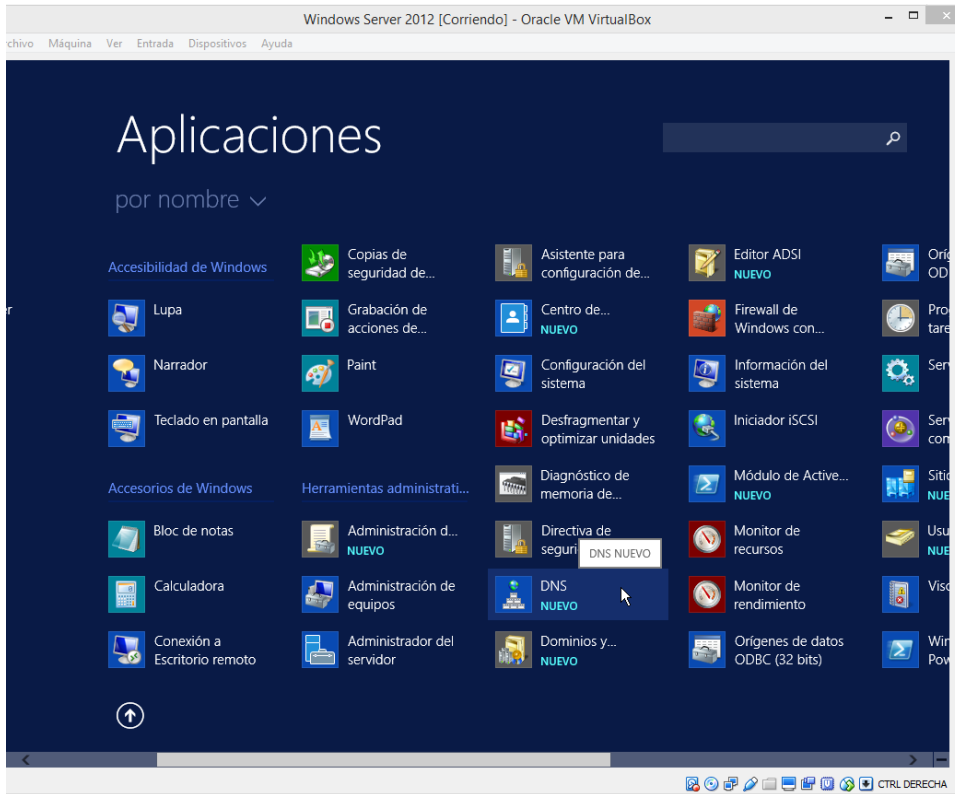


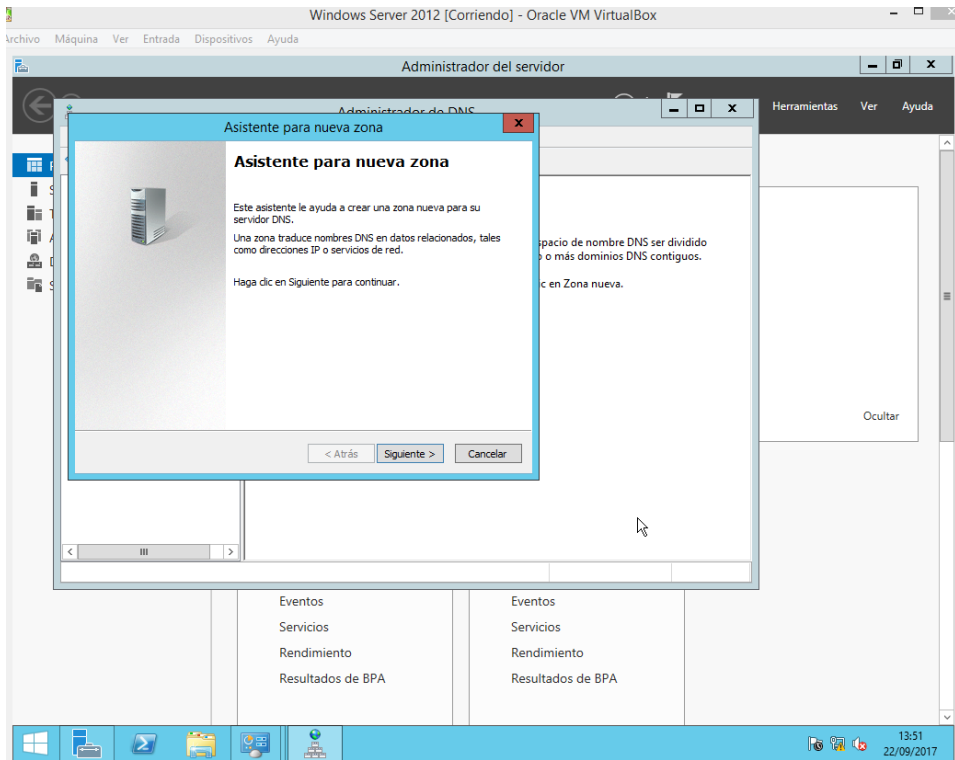
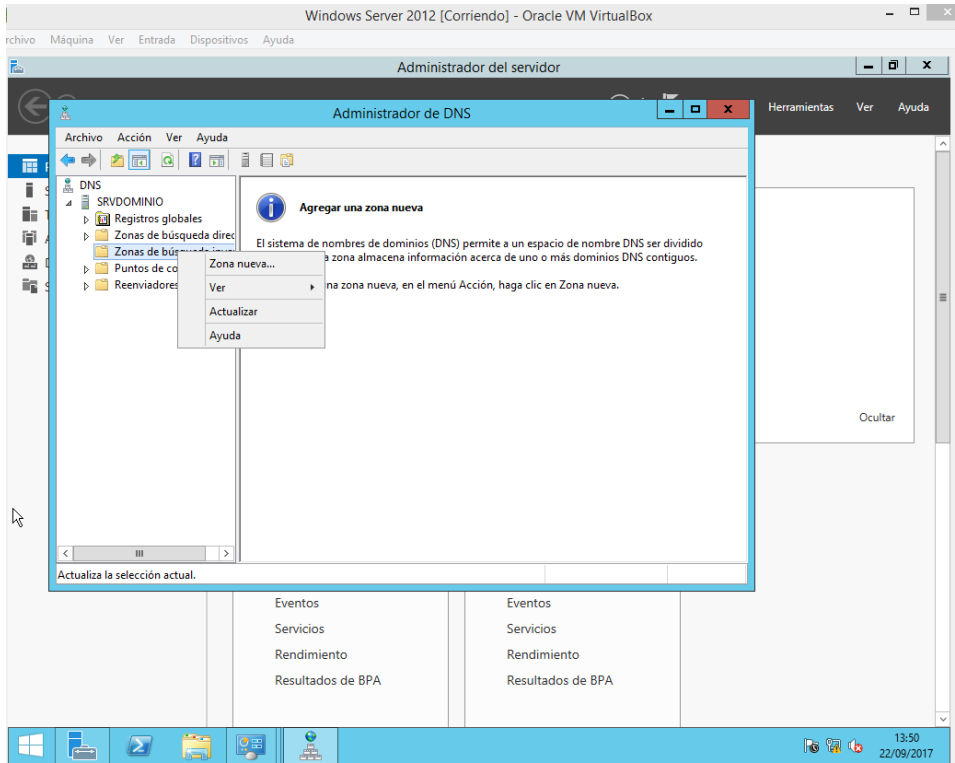
Presionar en Instalar y luego se reinicia

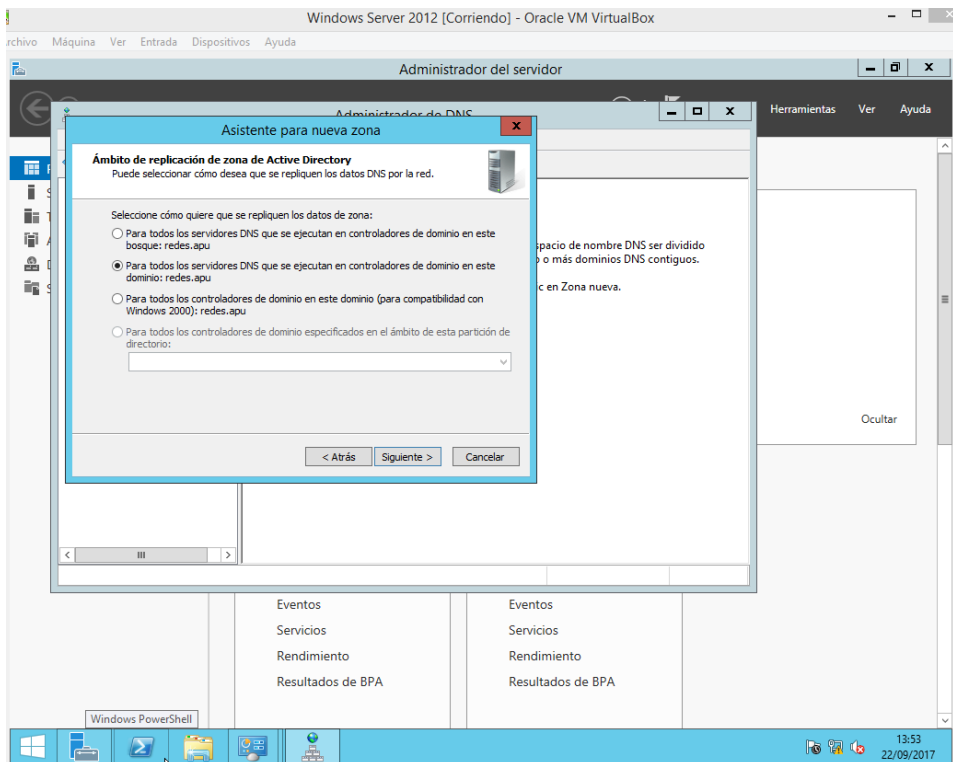
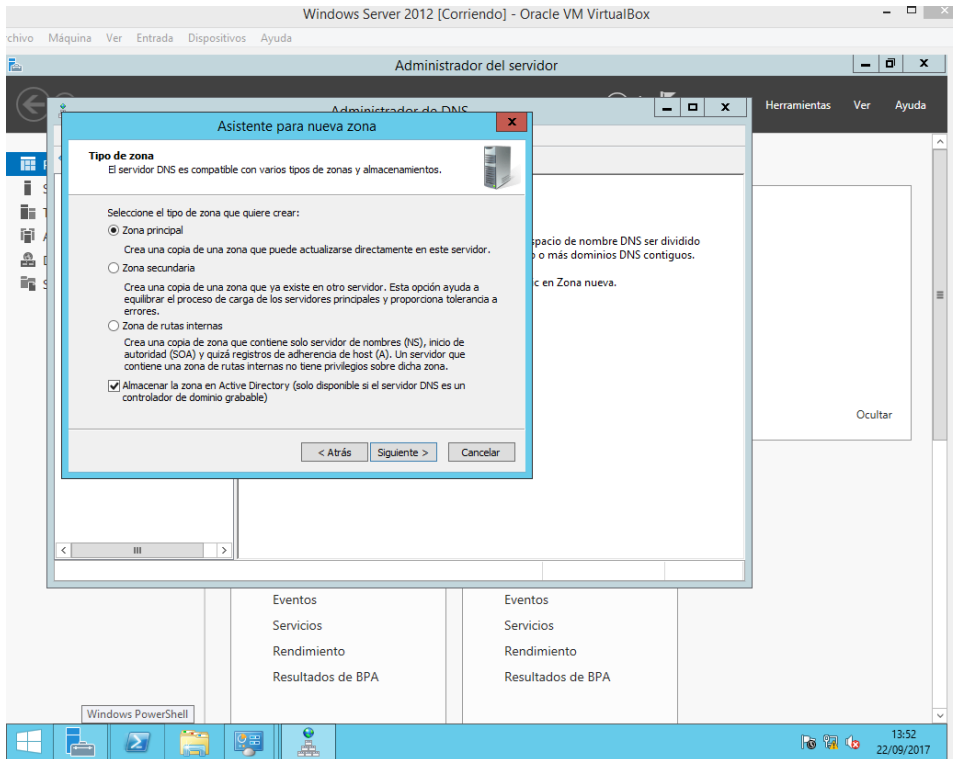


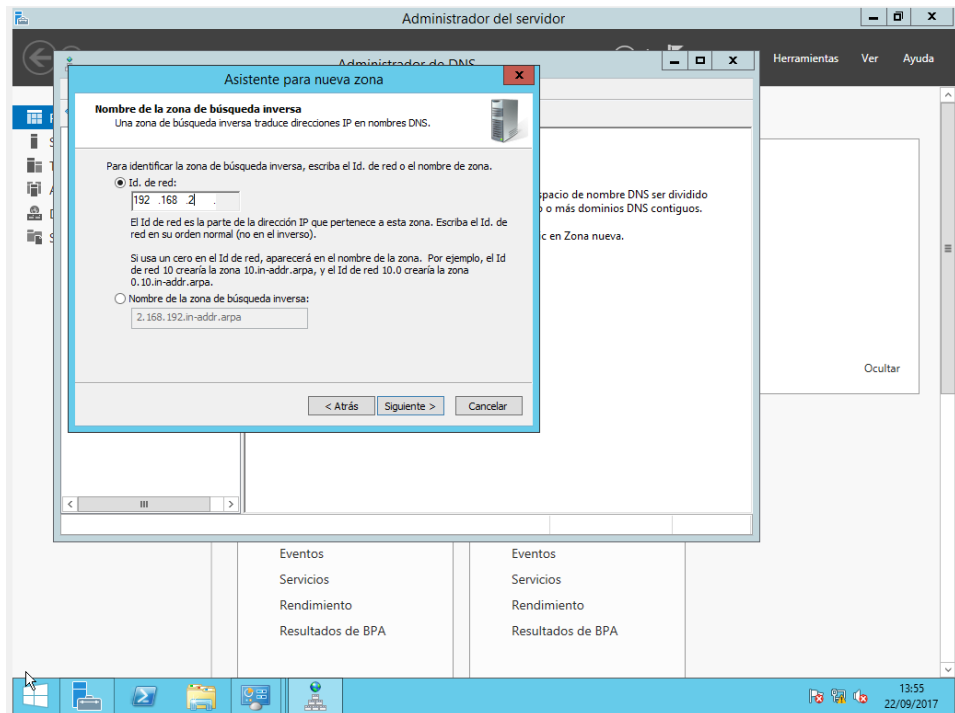
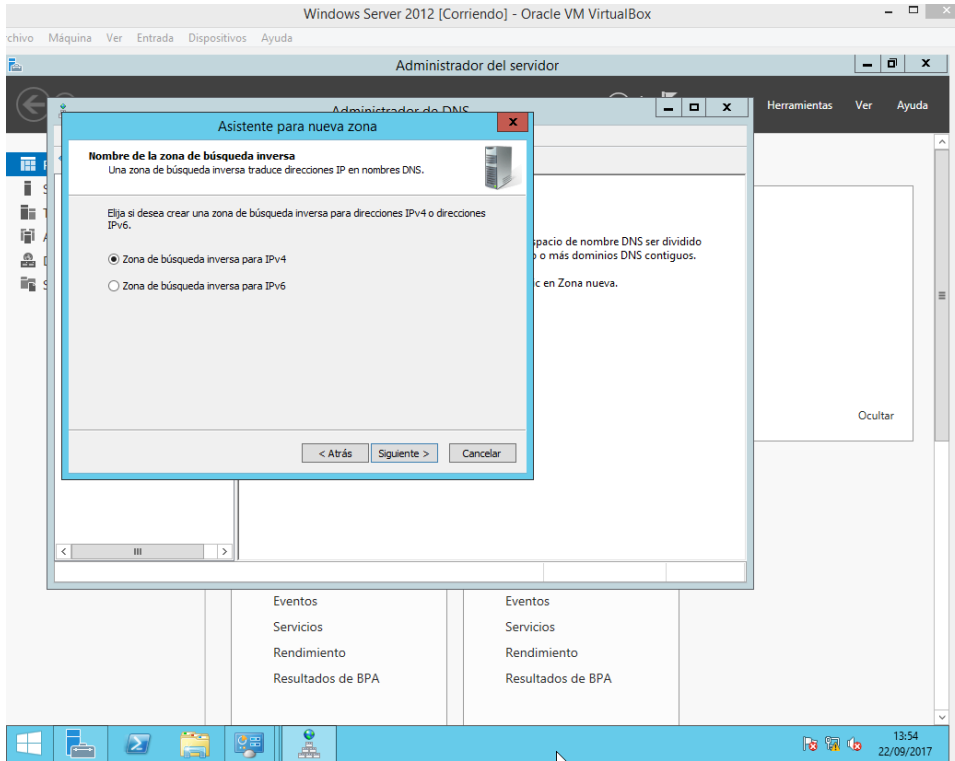
Corregimos la configuración

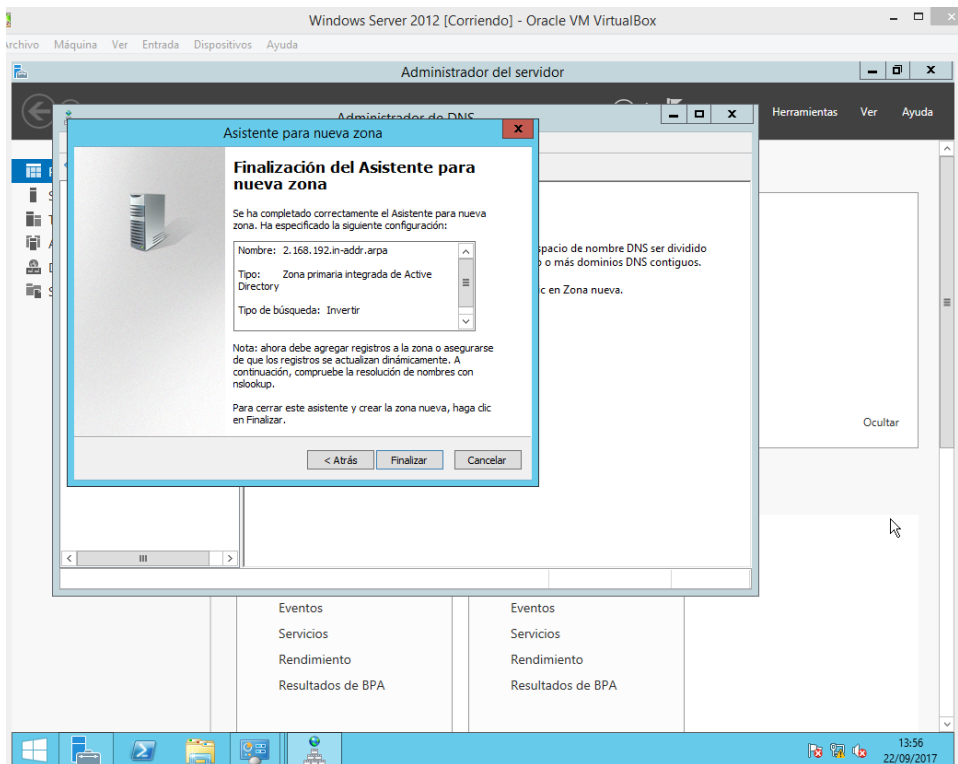
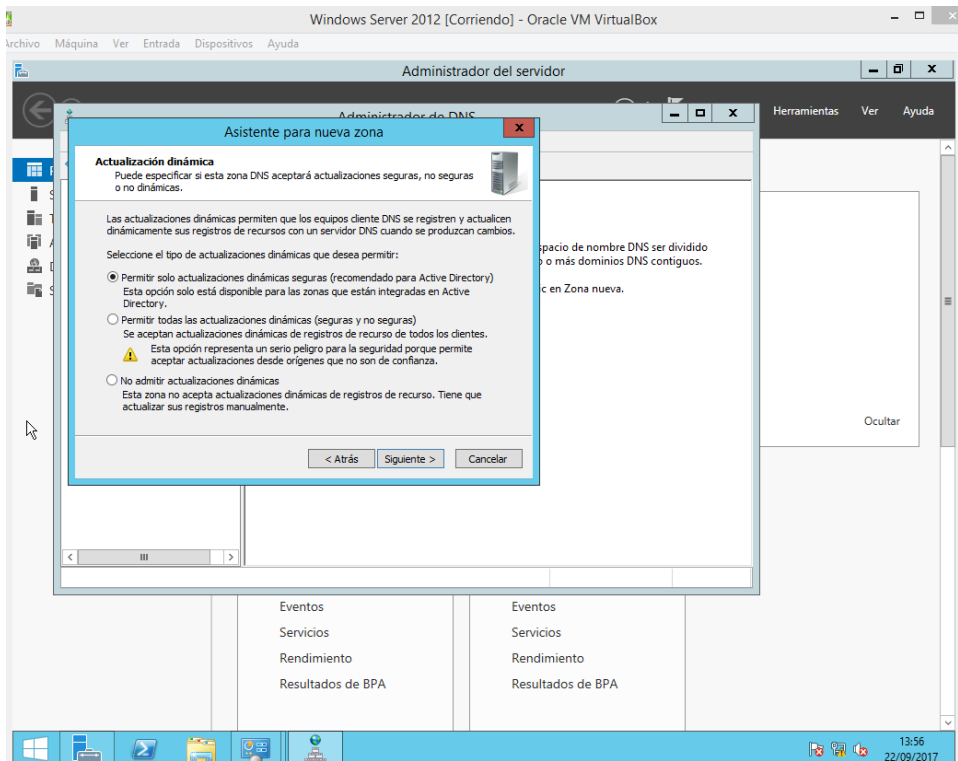


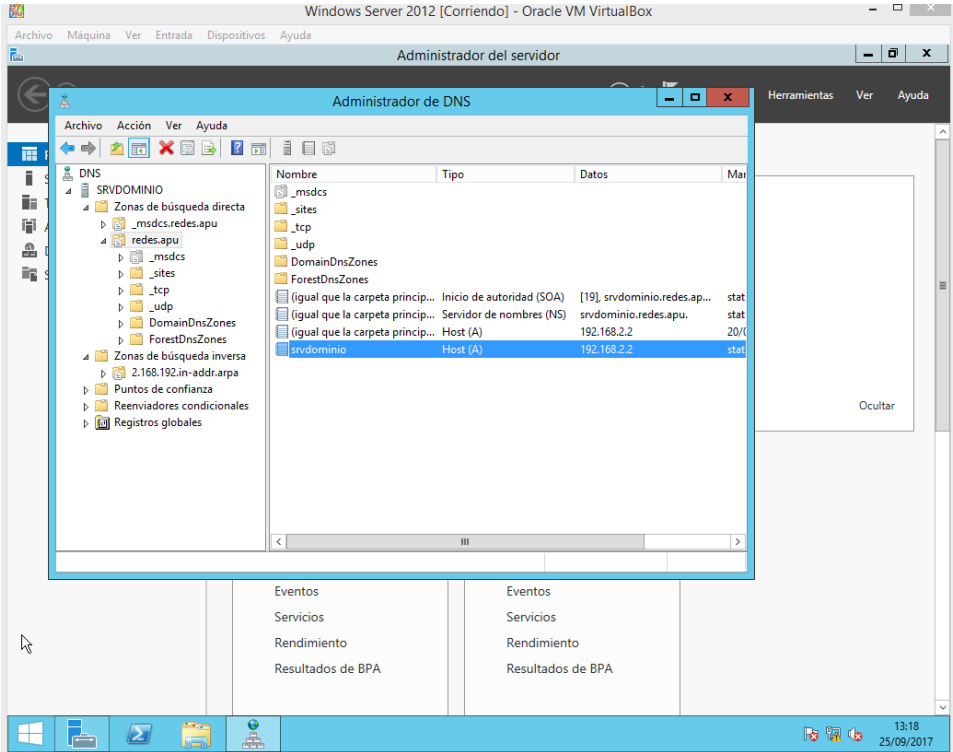




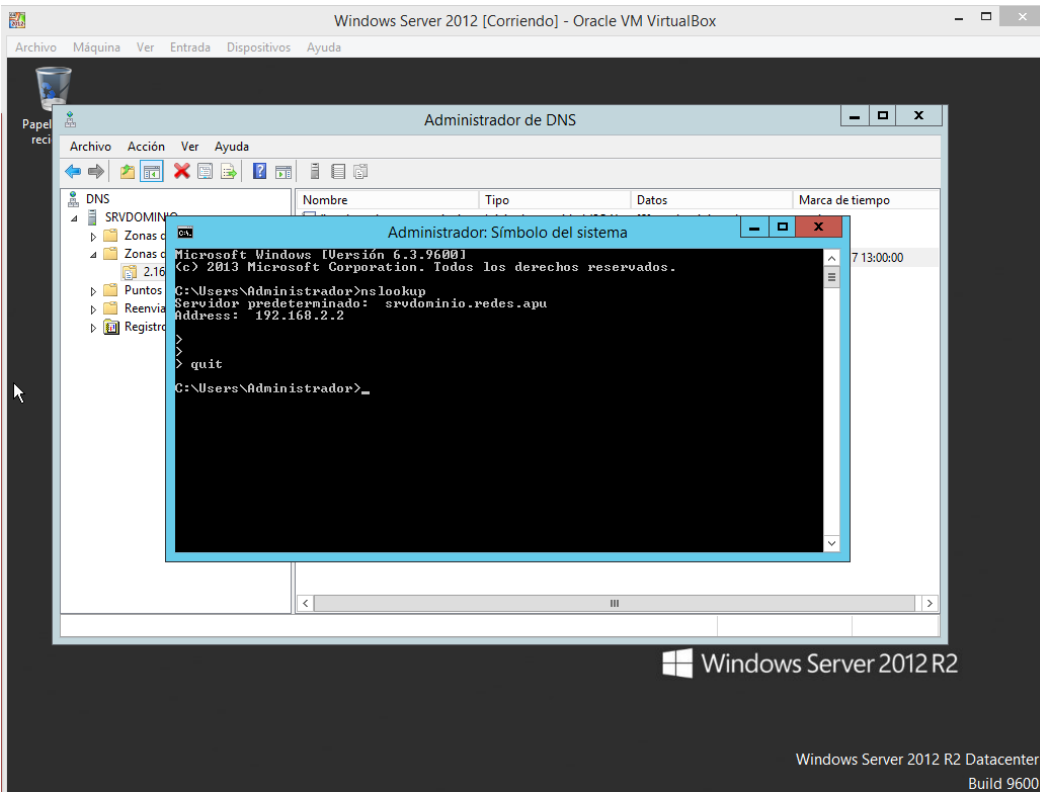




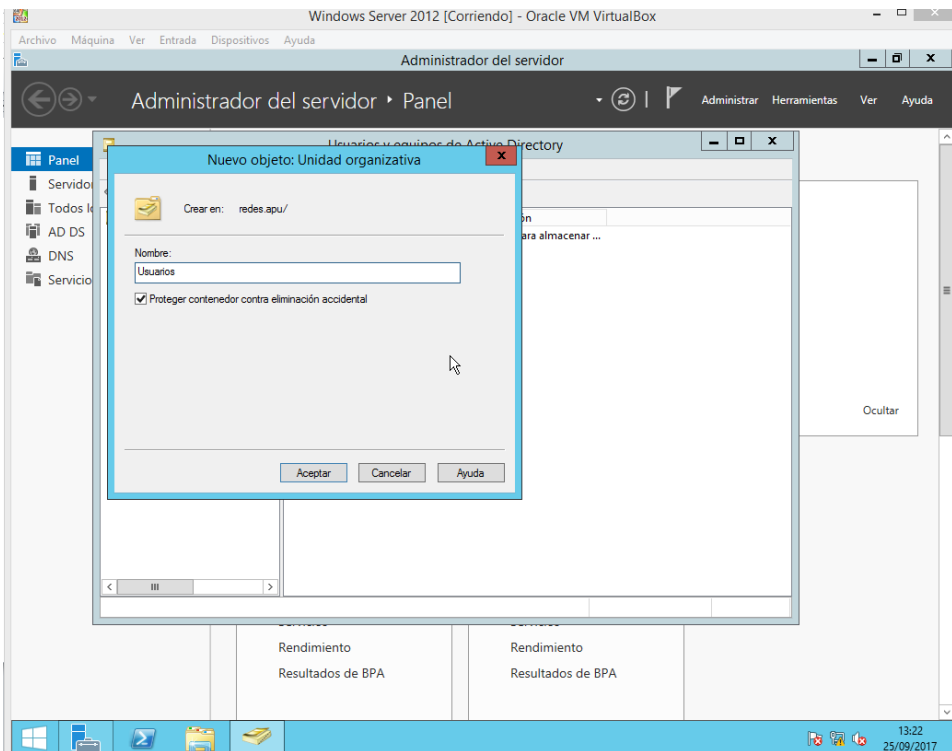
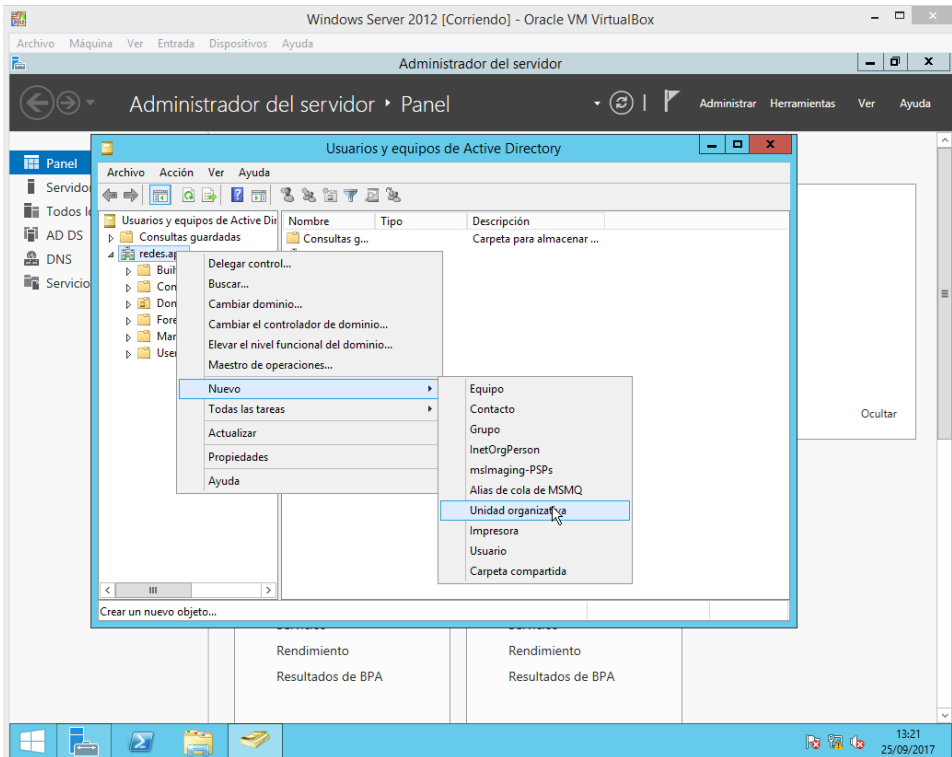


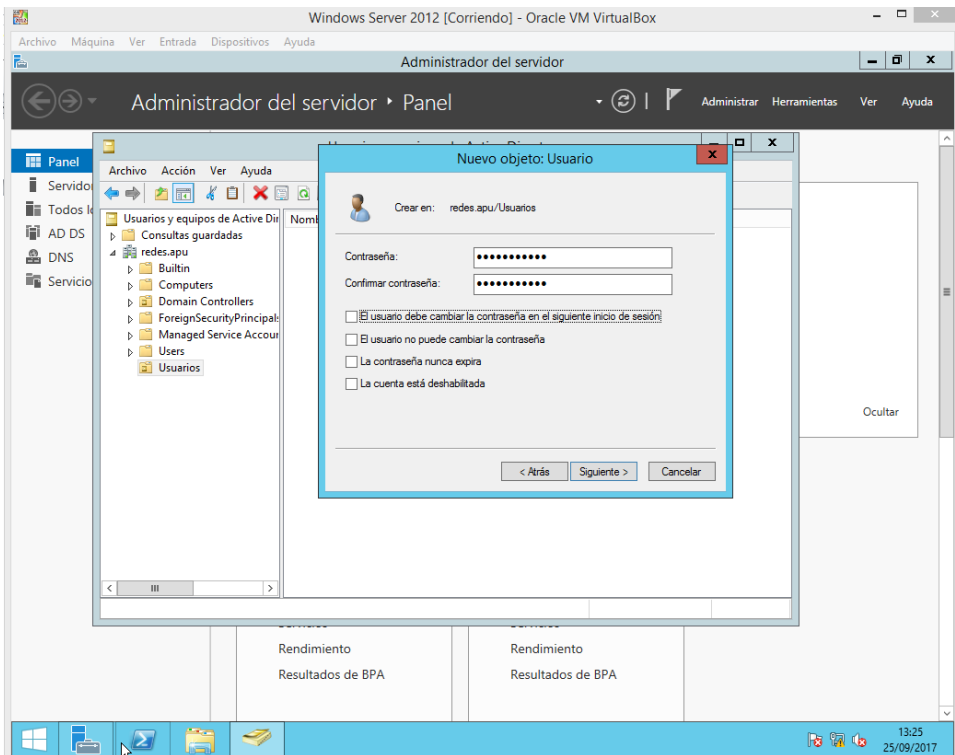
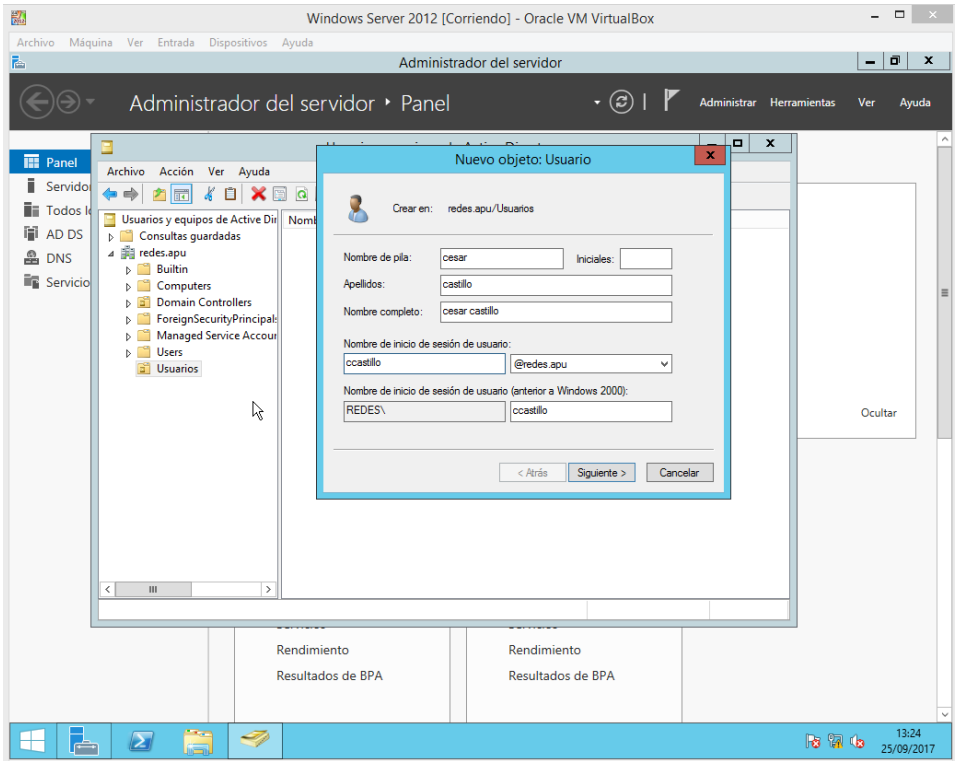


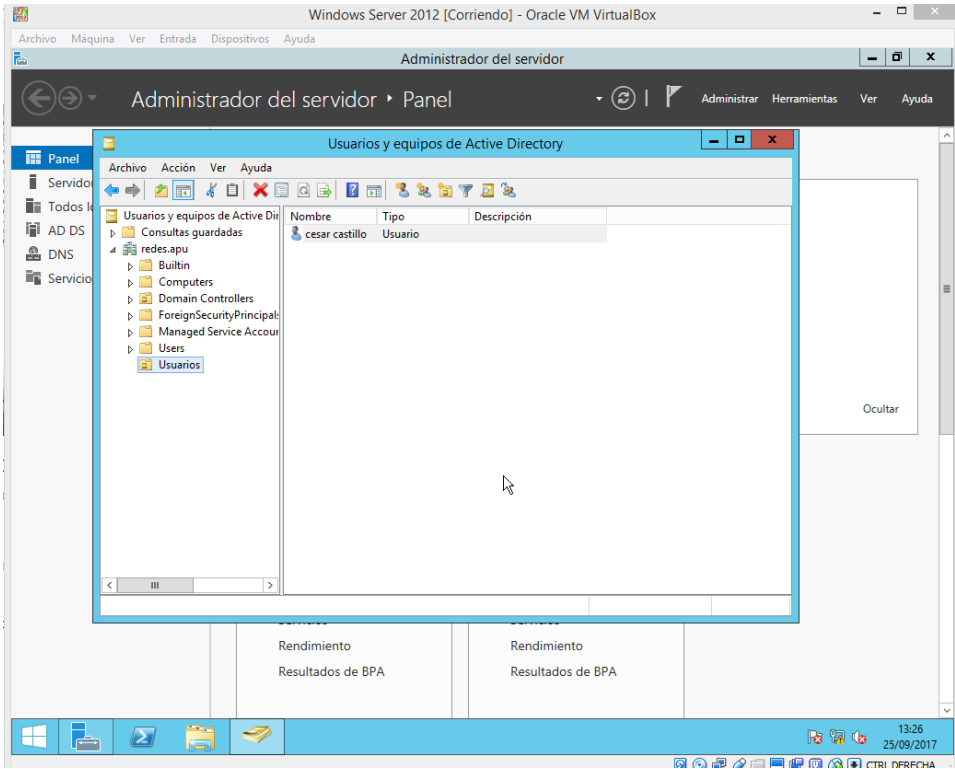
Probamos nuestro servidor



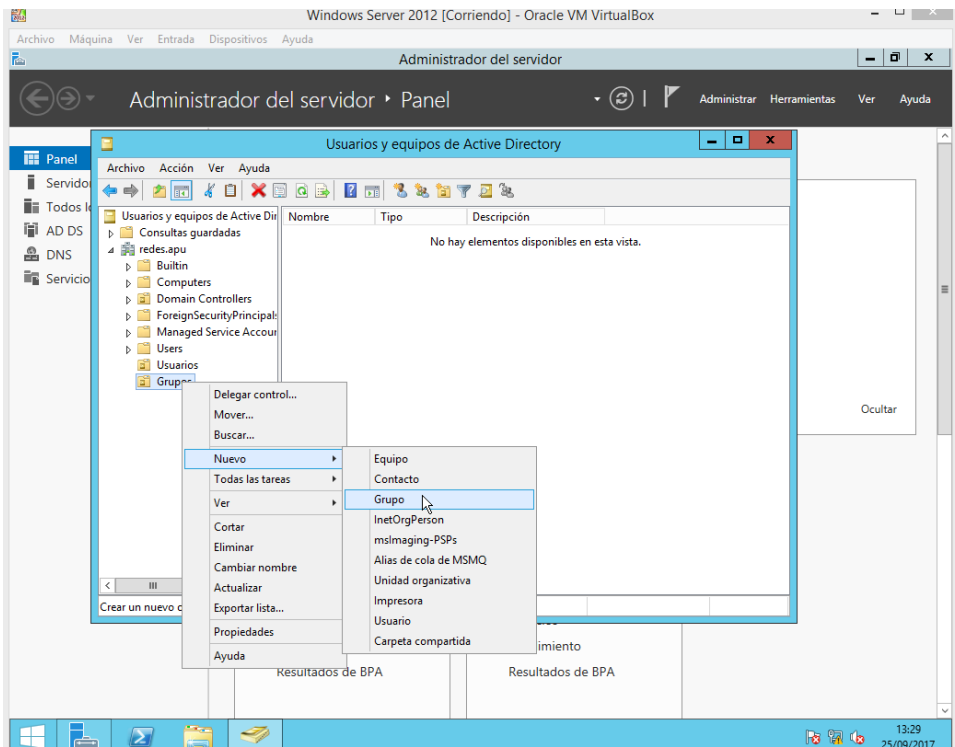
Ahora vamos a crear un usuario y un grupo

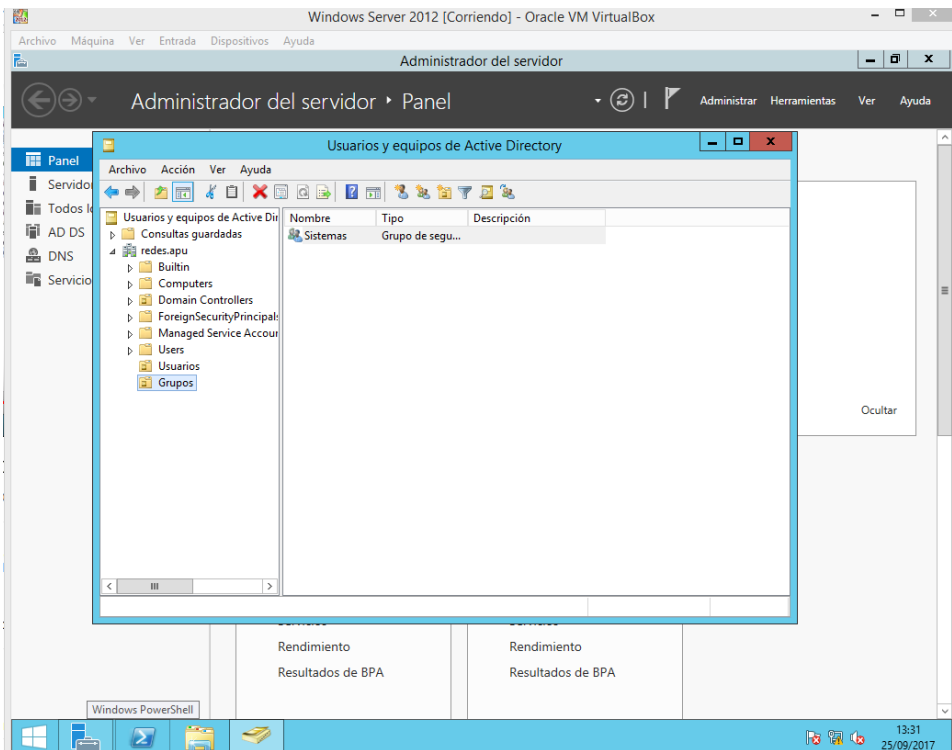
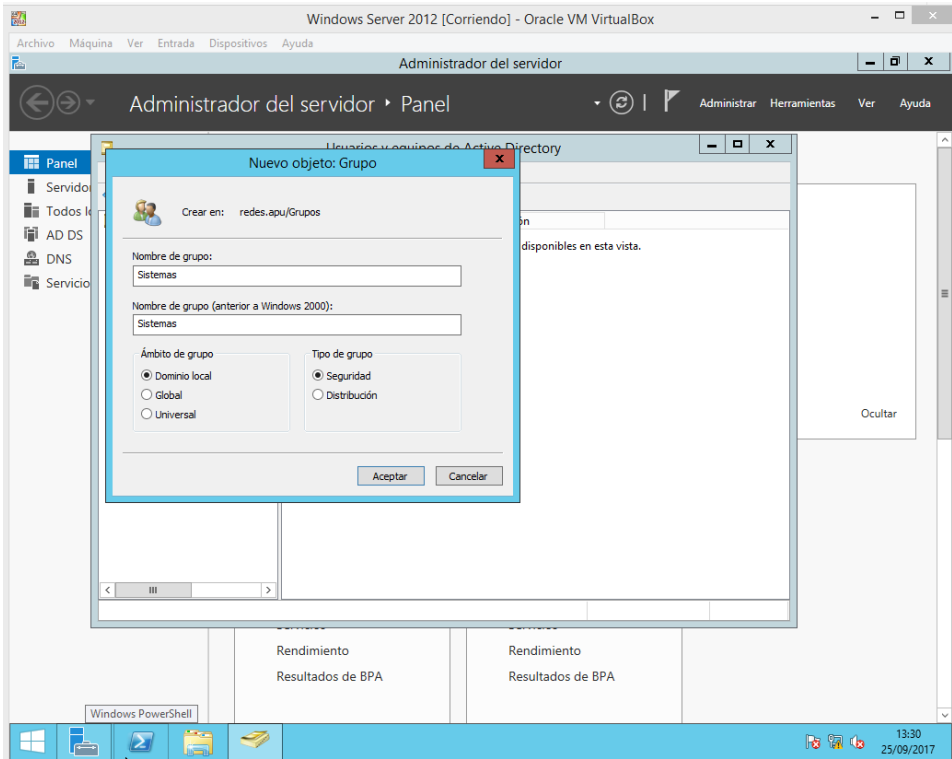


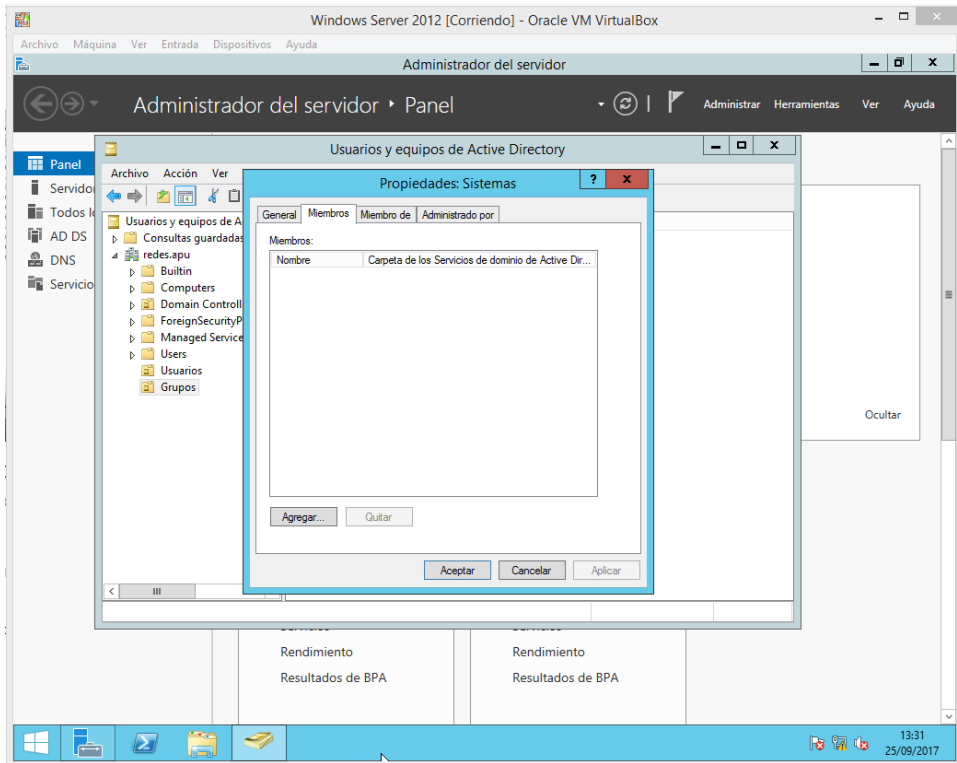




Crear una Unidad Organizativa denominada Grupos







Presionamos Agregar

